

WFA Women's  
Championship



# MATCH DAY PROGRAMME

VOL

05

2019

20 OCT



VERSUS





## PRESENTS

London City Lionesses Versus London Bees F.C.

Sunday, October 20, 2019

KICKOFF 2PM

Dartford | Princes Park

## IN THIS PROGRAMME

-  Greetings From The Chair
-  Message From The Manager
-  Player Interview: Ellie Mason
-  Match Day Opposition: London Bees F.C.
-  Meet Our Pride
-  Cub Competition



# GREETINGS FROM THE CHAIR

Dear Supporters,

Welcome back to Prince's Park stadium for today's Continental Cup clash with London Bees. I'd also like to extend a warm welcome to everyone from London Bees today and we're hoping for another exciting match for everyone here today.

After a couple of weeks away from Dartford we return after a really satisfying win at Coventry United last weekend. We showed real grit and determination to come back from a goal down and get all three points. It was a great day for Kallie Balfour, who on her birthday scored the late winner for us.

Four wins from six games is a strong start but you look at the table and things are really tight. We're level with two other teams so it shows that we have to fight for every point in this league to ensure we finish as high as possible come the end of the season.

It's another break from league action, but an important chance for us to get three points on the board in the group for the Continental Cup today. London Bees were our first opponents in a competitive game where we secured a really strong 2-0 win. We will take confidence in that but there are certainly no easy games at this level, you only have to look at the Championship table to see how close Bees are to us. Our last home game was a tough result against Arsenal, so we are effectively looking to bounce back in this competition and get underway.



Both the attitude and application of the players has been exemplary during their preparations in training for the game this week. We are constantly in awe of their approach to their roles on and off the pitch and we feel very lucky to have an outstanding group of young women. The coaching staff have also continued to excel in keeping standards high and we're always pushing the players to go to the next level. John Bayer has stepped up and I'm confident he will keep the team going at the same level in the next few weeks. Our targets remain from the start of the season and many of these players are on a journey and one which we hope is long and successful.







We are still in our beginnings and the infrastructure around the pitch is being put together. We continue to work hard to encourage more supporters to come to Prince's Park and we are confident that once supporters are through the turnstiles that it will be the first of many visits to watch London City Lionesses.

Thanks again for your continued support and here's to an exciting game today.

*Diane Culligan*





**LDN  
CTY**

# MESSAGE FROM THE MANAGER

*"I want to congratulate Poppy Wilson on her deserved call-up to the England under-21 squad and Juliette Kempfi represented Finland once again, in a strong win."*



Hello everyone and welcome back to Prince's Park. I hope you enjoy today's game against London Bees and I'd like to welcome everyone involved with the Bees, including their supporters, players and staff.

We played London Bees in our first game of this season, winning 2-0 at the Hive, but that doesn't mean too much going into this game - especially as they have got stronger as they've settled into their season. Bees' manager Lee Burch was awarded with the FA Women's Championship Manager of the Month Award and that just shows that they've had a strong start and we're aware they'll look to continue that today.

I'm really pleased at the reaction of the players shown last week at Coventry. We travelled there with a poor result against Durham hanging over us, but the players showed their character in bouncing back in that game. Having gone a goal down, the challenge became even more difficult to overcome, but we dug in and managed to get the three points. I was delighted for Kallie Balfour, coming off the bench to grab the winner on her birthday. She will certainly remember that for a long time and it's moments like that which we'll look back on at the end of the season.

Looking at the league table, albeit very early on in the season, shows how important that victory was. If we had lost that game, it might have been a big early blow to our hopes in the league this season. You only have to look at Durham's result last weekend, a bit of a shock loss to Blackburn Rovers, and it shows that you can't take anyone for granted at this level.

We've got two home games on the spin now and a chance to ensure we entertain the home crowd for the next two weeks. We'll be aiming to get two positive results, starting with today as we resume our Continental Cup campaign. Obviously, we kicked off this competition with a tough game against Arsenal so there's an objective to put that right today.

Since our last home match, we were delighted to see our players representing their countries during the international break. I want to congratulate Poppy Wilson on her deserved call-up to the England under-21 squad and Juliette Kempfi represented Finland once again, in a strong win. Hannah Short represented Great Britain at the inaugural World Beach Games in Doha, where her team narrowly missed out in the final and took home a silver medal. We're immensely proud of our players performing on the international scene and we welcome them back, better for the experiences.

Finally, I'd like to thank everyone at the Club for their efforts so far this season and I'm confident that we'll continue to work to the same standards that have been set in the last few months. James Marrs and Ali Monajati in particular have been exceptional in their roles and I've been delighted with their work with the team so far.

We'll look to carry on our good work and hope to provide another entertaining game on the pitch.

Enjoy the match!

**JOHN BAYER**  
Interim Manager





The FA Women's  
Championship



**DON'T MISS A GAME  
THIS SEASON**

**BUY TICKETS:**

**[WTM360.CO.UK/SALES/LONDON-CITY-LIONESSES](https://www.wtm360.co.uk/sales/london-city-lionesses)**

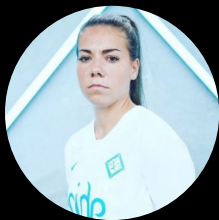




# PLAYER INTERVIEW:

## ELLIE MASON

London City Lionesses skipper Ellie Mason talks through the start of the season and is our first player to assess her teammates.



### How has the start of the season been?

It's been a really good start for us, we've settled well as a squad and have had some great results. As a group, we're getting stronger and stronger with every match and training session that comes. We're confident that we're only going to get better and we want to be there or thereabouts in the league come the end of the season.

### You were given the captain's armband at the start of the season, how have you found that?

It's an honour to lead this group of players each game. I am really proud to be a part of this club and to be given this role is an added responsibility that I relish. I make sure that I am available for my teammates on and off the pitch and I am grateful that I have been given that trust. I like to think I can play a big role in making sure this team and the club get to where they want to go.

### How is the club shaping up since you joined?

It's a professional set-up and there is full-time support across the club - the standards are really high. It's a great bunch of girls here and we have the foundations behind the scenes to do really well. Everything is geared up for us to go far and I'm confident we will.

### Do you feel you made the right decision in joining London City Lionesses?

It's been a great journey so far and we're only at the beginning. Looking to the future I feel like the group are ambitious and that's exactly what I hoped for when I joined. We have a great platform to do well and I want to repay the faith shown in me.

- Who is biggest joker in the changing room? [Freda Ryisi](#)
- Who is the best trainer? [Lucy Fitzgerald](#)
- Who is the fastest? [Kallie Balfour](#)
- Who has the best dress sense? [Lily Rgg](#)
- Who has the worst dress sense? [Lucy Thomas](#)
- Who is in charge of the music in the dressing room? [Grace Neville](#) and [Flo Fyfe](#)
- Who has the best goal celebration? [Evie Clarke](#)
- Who is always looking in the mirror? [Leanne Cowan](#)
- Who is the worst dancer? [Chantelle Mackie](#)
- Who is the best dancer? [Freda Ryisi](#)
- Who has got the coolest tattoo? [Harley Bennett](#)
- Who has got the worst wheels? [Ylenia Priest](#)
- Who wins skill school? [Freda Ryisi](#)
- Who is hard as nails? [Ylenia Priest](#)
- Who is the cleverest? [Flo Fyfe](#)
- Who reads the game? [Hannah Short](#)



# MATCH DAY OPPOSITION



2019

2020

- 1.Sarah Quantrill (GK)
- 2.Ellie Wilson
- 3.Megan Alexander (Captain)
- 4.Hayley West
- 5.Georgia Roberts
- 6.Billie Brooks
- 7.Lauren Pickett
- 8.Bonnie Horwood
- 9.Lucy Loomes
- 10.Brooke Nunn
- 11.Rosie Kmita

- 12.Courtney Ward-Chambers
- 13.Taylor O'Leary
- 14.Georgie Giddings
- 15.Megan Lynch (GK)
- 16.Nicola Gibson
- 17.Nikita Whinnett
- 19.Mollie Dench
- 21.Flo Gamby
- 22.Amelia Hazard
- 23.Merrick Will



LIONESSES



ENGLAND

WEMBLEY  
STADIUM  
CONNECTED BY EE

SATURDAY 9 NOVEMBER 2019 — 5.30PM

TICKETS £15 ADULTS / £1 KIDS

[THEFA.COM/TICKETS](http://THEFA.COM/TICKETS)



LDN  
CTY

SELF

M

E



MADE

A NEW ERA FOR FOOTBALL.  
A NEW CLUB FOR LONDON.  
FOLLOW THE PRIDE.

# MEET OUR PRIDE

2019



2020

- |                      |                     |
|----------------------|---------------------|
| 1. Lucy Thomas       | 13. TBC             |
| 2. Chantelle Mackie  | 14. Kallie Balfour  |
| 3. Leanne Cowan      | 15. Vyan Sampson    |
| 4. Poppy Wilson      | 16. Harley Bennett  |
| 5. Hannah Short      | 17. Lucy Fitzgerald |
| 6. Ylenia Priest     | 18. Ellie Mason     |
| 7. Liz Ejupi         | 19. Lily Egg        |
| 8. Freda Ayisi       | 20. Annie Rossiter  |
| 9. Gabby Ravenscroft | 21. Flo Fyfe        |
| 10. Juliette Kemppi  | 22. Eden Bailey     |
| 11. Evie Clarke      | 23. Amber Gaylor    |
| 12. Grace Neville    | 24. Ellie Arnold    |



#SQUADGOALS



# **THESE WILDCATS JUST LOVE TO PLAY**

**SSE Wildcats provide girls aged  
5-11 the opportunity to have fun,  
make friends and play football.**

With over 1,000 centres nationwide,  
find a centre near you and join the fun!



• THE FA GIRLS' FOOTBALL CENTRES •

Find your nearest centre at  
**[TheFA.com/SSEWildcats](http://TheFA.com/SSEWildcats)**





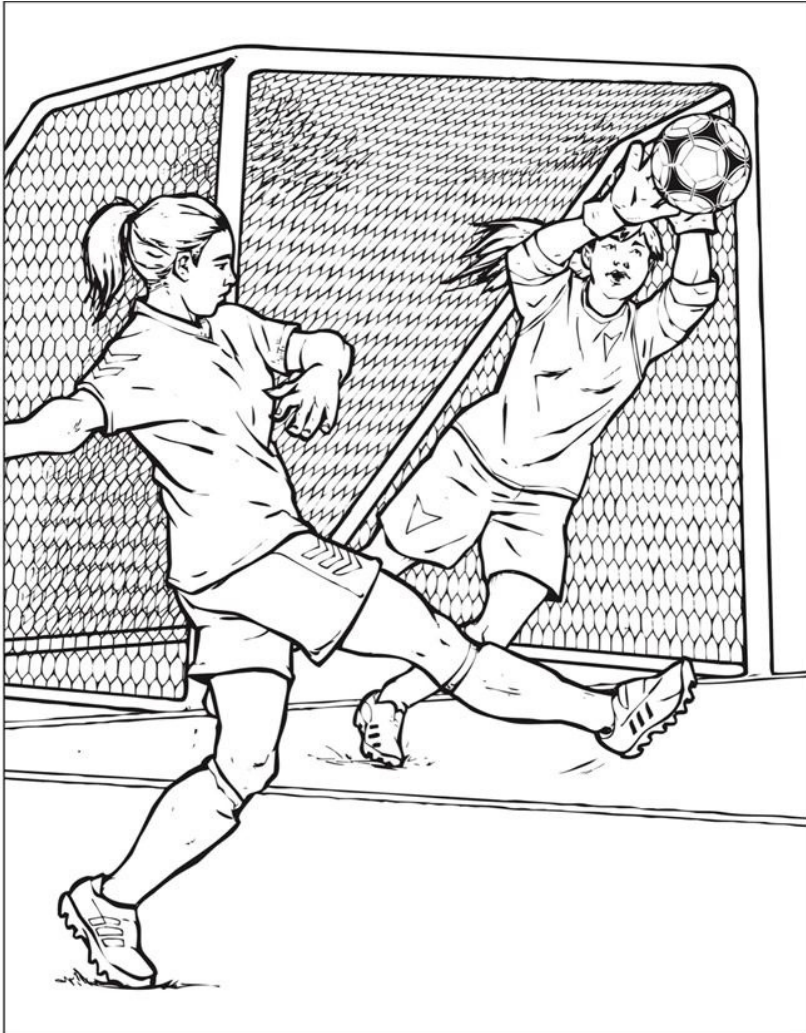
# CUB COMPETITION

STAND A CHANCE TO WIN TWO TICKETS TO ANY GAME THIS SEASON.

All you have to do: Download this page. Colour in, complete your details, scan and email back to us at [cubs@londoncitylionesses.com](mailto:cubs@londoncitylionesses.com) before Midday on October 25th. The cub with the best entry will be announced in our next match day programme!

AGE:

NAME:



YOUR FAVORITE LCL PLAYER:



Thank you to our principal partner,



We look forward to a successful season together.

WE ARE



THE PRIDE

*proudly sponsored by*



SETL