

Installing 32-bit Global Applications Part-2 (\$LICENCE and \$SETUP)

1. Introduction & Overview

This document, which should be read in conjunction with Technical Note IN293, describes the new software distribution and installation mechanism that is being used to distribute Global 3000 Payroll V7.3. This document should be considered the detailed installation guide for Global 3000 Payroll V7.3

Resellers who have installed Global 3000 V5.0 or Global 3000 Payroll V7.2 from the GPS CD will already be familiar with the Global 3000 Payroll V7.3 installation procedure described in this document. Note that the procedure for Global 3000 Payroll V7.3 is slightly different from, and includes a number of minor improvements over, the Global 3000 V5.0 procedure.

To summarise the procedures and Technical Notes:

Procedure	Technical Note
Installing Global 3000 V5.0	IN283
Installing Global 3000 Payroll V7.3	IN297 (this document); and IN293 (for an overview)
Upgrading Global 3000 V5.0 and Global 3000 Payroll V7.0	IN284

1.1 Overview of the Installation Procedure

This section is only required for resellers who have **not** already installed Global 3000 V5.0 from the GPS CD.

The new CD-based software distribution mechanism is vastly superior to the traditional serialised diskette, or sub-volume, based technique. The key improvements, shown emboldened, are detailed in the text that follows.

The new procedure involves releasing a non-serialised "Global Product Set" (GPS), containing all the Global products (currently only Global 3000 V5.0 and Global 3000 Payroll V7.3), to every reseller each month. Initially, the GPS will be released on a Windows format CD. However, the software distribution mechanism does not depend on any particular media. Thus, the GPS can be distributed via CD, DVD etc. or by downloading from a web site. NB. For a glossary of terms and acronyms, see Appendix A.

The contents of the monthly GPS will be guaranteed to be "up to date" on the day the GPS is created. **Thus, the inevitable delays involved in transferring new software from Development to Production have been eradicated.**

Given that the reliability of CD's (and DVD's and internet downloads) is significantly higher than the reliability of diskettes, **then the problems and frustrations caused by unreadable diskettes have been eradicated.**

The software that comprises the GPS will not be installable without a licence file. The licence file (see section 5) will be the only information that is required to fulfill a software order. The licence information will be sent by the Production Dept. via email. **Thus, any delays incurred when dispatching a software order have been eradicated.**

Given that the simple licence file is the only information required to fulfill a software order, **then the problems and frustrations caused by incorrect order-information and/or incorrect generations have been significantly reduced.**

When a product is updated it will automatically become available on the next monthly GPS. **Thus, all resellers will automatically receive all upgrades to all software products.**

Although a monthly release cycle is envisaged for major re-releases, the new methodology allows a rapid-response (non-Autozap) release mechanism for emergency repackages/re-releases. This "Global Product Service Pack" mechanism is described in more detail in Technical Note IN284.

The new software installation process automatically records and logs all software that has been installed at a particular site. Checking that a site is running the latest software merely involves inspecting the installation log file.

2. Software Installation Overview

Global software distributed within a Global Product Set is installed via a multi-stage process:

- One, or more, de-activated Global Cabinet Files (see section 3) are activated using the \$LICENCE utility (see section 6). This process requires a valid Global Licence File (see section 5);
- An Installation log File (\$\$INSLOG) **may** have to be created. The requirement for this stage depends on the GSM Service Pack (see below);
- The activated Global Licence Files are installed using the \$SETUP or \$32INST utilities (see section 8). This phase involves both a mandatory generic installation step, followed by an optional, product-specific installation step. The product-specific step is not required for some products (although it **is** involved in the installation of Global 3000 Payroll V7.3). **Important note:** The generic installation and the product-specific installation steps are seamless (i.e. where necessary, the product-specific stage follows automatically) so that the installer is only aware of a single "install product" option.

The precise procedure depends on the GSM Service Pack and whether the installation is being performed on GX. The permutations on GSM SP-15, or later, are:

Stage	Non-GX	GX
Cabinet File Activation. See section 6.	\$LICENCE	\$LICENCE (see note 1)
Installation Log File creation. See section 7.	Not required (see note 2)	Not required (see note 2)
Product installation. See section 8.	\$SETUP (see notes 3 & 4)	\$SETUP (see notes 3 & 4)

Note-1: When running on GX \$LICENCE automatically runs the 32-bit, GX \$32LICE.

Note-2: This note is intentionally left blank for compatibility with previous versions of this document;

Note-3: \$32INST will automatically run \$SETUP.

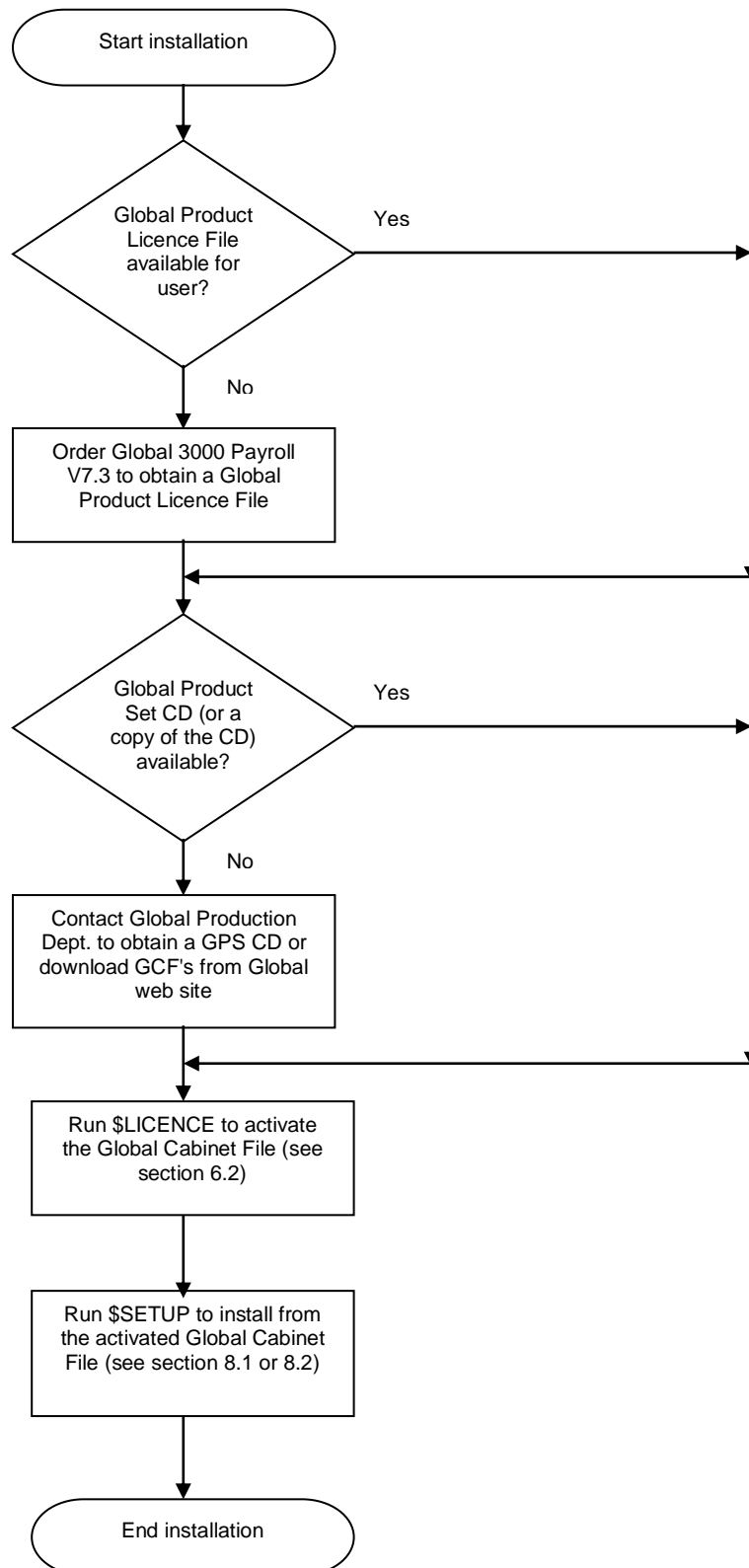
Note-4: \$INSTALL will automatically run \$SETUP if all the installable products can be installed using \$SETUP.

The \$SETUP (and \$32INST) utility also allows the contents of an activated GCF to upgrade a pre-installed product (see section 8). This process does not involve the application-specific installation phase.

In addition to using \$SETUP (\$32INST) to upgrade installed software from a set of activated Global Cabinet Files, software updates may also be applied from a "Global Product Service Pack" using the \$GSP utility. See Technical Note IN284 for further details.

2.1 Installation Flow-Chart for GSM SP-15

This flow-chart should be followed when installing Global 3000 Payroll V7.3 on GSM SP-16:



3. Global Cabinet Files (GCF's)

One of the key components in the new software distribution mechanism is the Global Cabinet File (GCF). A Global Cabinet File is created for each software module/version combination. Only Global 3000 V5.0 and Global 3000 Payroll V7.3 GCF's are currently available in the Global Product Set. However, this restricted release will be expanded as further products are released in the Global Product Set. Each Global Cabinet File is released as a standard Windows file and contains all the software components for a particular module.

The GCF's released in the monthly GPS are unserialised and de-activated. The \$LICENCE utility (see section 6) serialises and activates one, or more, GCF's.

The naming convention for a Global Cabinet File is as follows:

ppv_v_yymmrr.GCF

where:

<i>pp</i>	Product Code (e.g. PR)
<i>vv</i>	Version Number (e.g. 73)
<i>yy</i>	Year Number of release (i.e. 00=2000; 01=2001 etc.)
<i>mm</i>	Month Number of release (01 to 12)
<i>rr</i>	Revision Number of release (01 to 99)

For example, the March-2006 release of the PR V7.3 product will be:

PR73_060301.GCF

The April-2005 release of PR 7.3 would be:

PR73_060401.GCF

The Revision Number is tentatively reserved for future use. At the time of writing only a single revision (i.e. revision 01) of each monthly Global Cabinet File has been released.

Note that the various GCF's for a particular Product Code/Version Number combination naturally collate in order of release revision.

4. Global Cabinet Files and the contents of the Monthly GPS

The initial monthly GPS will be released on a Windows format CD containing the following files (in addition to numerous other folders, text-files and documents):

GSM81_yymm01.GCF
PR72_yymmrr.GCF
NY50_yymmrr.GCF
XE50_yymmrr.GCF
ZA50_yymmrr.GCF

ZC50_ymmrr.GCF
 ZD50_ymmrr.GCF
 ZG50_ymmrr.GCF
 ZI50_ymmrr.GCF
 ZJ50_ymmrr.GCF
 ZL50_ymmrr.GCF
 ZM50_ymmrr.GCF
 ZO50_ymmrr.GCF
 ZP50_ymmrr.GCF
 ZQ50_ymmrr.GCF
 ZS50_ymmrr.GCF
 ZT50_ymmrr.GCF
 ZX50_ymmrr.GCF

In addition to the instantly recognisable Global 3000 V5.0 and Global 3000 Payroll V7.3 GCF's the following extra GCF file is present on the GPS:

GSM81_ymm01.GCF

Special GSM GCF. This file is required for all installations and re-installations

The contents of the other files and folders on the GPS CD are beyond the scope of this document.

5. The Global Product Licence File (GLF)

For every software order that includes one, or more, products that are available on the current GPS, a Global Product Licence File (GLF) will be emailed to the reseller who has placed the order.

IMPORTANT NOTE: Do not confuse the textual Global Product Licence File (GLF) with the binary Global (GSM) Licence File (global.lic). The global.lic file, which is fully described in Technical Note IN245. is automatically created when GSM is installed (or during some Service Pack upgrades).

The Global Product Licence File (GLF) is a simple text file that contains the following information:

<i>Line number</i>	<i>Description</i>
1	Comment line describing the creation date, time and operator-id;
2	Version number (as a 4 digit decimal number);
3	7 character order number;
4	Serial number and standard checksum
5	Plain-text description of 1 st Product & Version
6	Encrypted 1 st Product & Version
7	Plain-text description of 2nd Product & Version
8	Encrypted 2nd Product & Version

- 9 Plain-text description of 3rd Product & Version
- 10 Encrypted 3rd Product & Version
- etc.

For example:

```
* Licence file created on 03/03/2003 at 14.24.28 by ALAN
0001
123456
2800001JTRRPS
* Product code PR version V7.1
YYBDLMZZPVKVTXYLDMBZVZWSGCGZDCGBLFDNJYHPRCZZZYQRNK
```

The name of the GLF is always `sssssss_nnnnnna.GLF`, where `sssssss` is the serial number; and `nnnnnna` is the Order Number for the software order. For example, the above licence file will be called:

`2800001_123456X.GLF`

Although the encrypted licence information appears daunting to key in, the licencing mechanism does not require any information other than the name of the GLF file to be supplied by the reseller. It is **not** necessary to key in the 50 character passwords. The \$LICENCE utility (see section 6) extracts the passwords from the GLF.

6. The \$LICENCE utility - Activating the Global Cabinet Files

The version of \$LICENCE included with GSM SP-16 automatically chains to a 32-bit, GX version (i.e. \$32LICE) when running on a GX screen.

6.1 \$LICENCE Overview

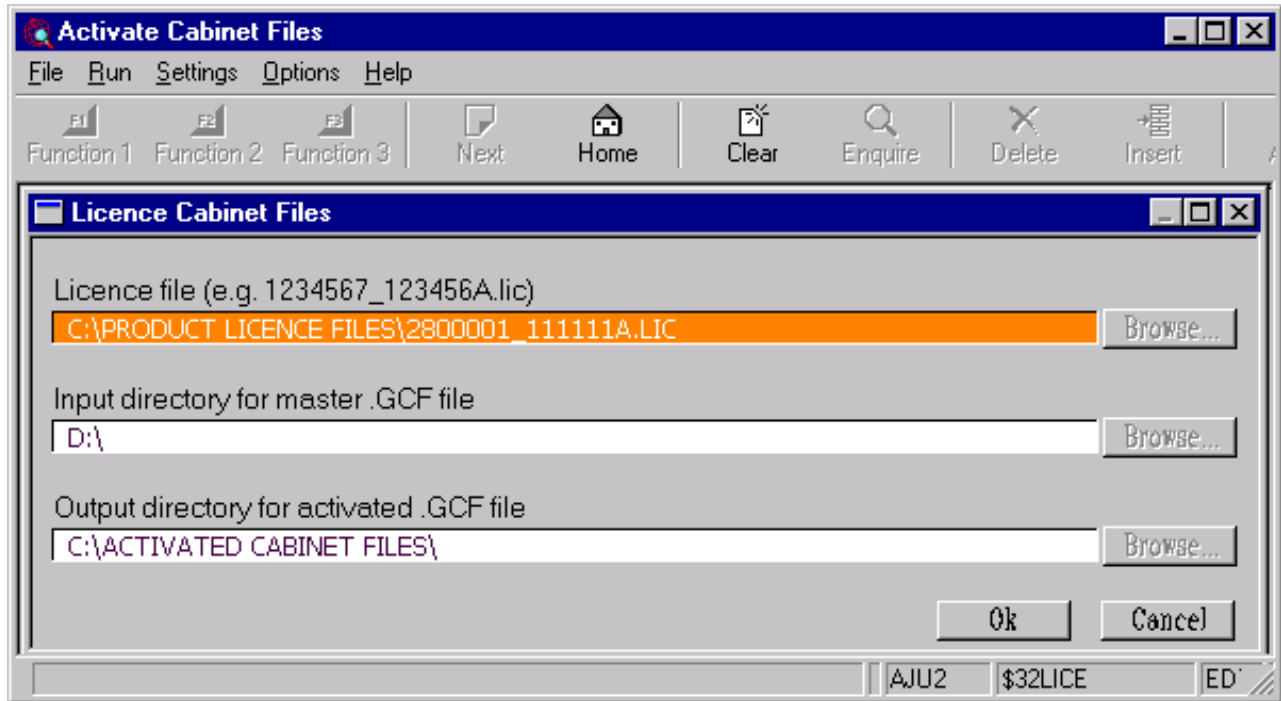
Running the \$LICENCE utility is the first stage in installing Global software from the GPS. The \$LICENCE utility merely "activates" the appropriate Global Cabinet File for every product listed in the Global Licence File. The \$SETUP (etc.) utility (see section 8) is then used to install the software from one, or more, activated GCF's.

This 2-stage installation process has been implemented to keep the software activation and serialisation process separate from the actual software installation process. This 2-stage process allows the activation and serialisation phase to be performed at the resellers premises on a GSM (Windows) configuration; and the software installation phase to be performed, on any configuration, on the end-users system (remotely, if necessary).

\$LICENCE prompts for the name of the Global Licence File and input and output directories. The input directory may be the root directory of the monthly CD or a work directory on a PC, or server, that contains the required Global Cabinet Files (i.e. the monthly CD can be copied to a suitable work directory on a PC). The output directory should normally be different, from the input directory (obviously the output directory must have write permissions).

6.2 \$LICENCE (32-bit GX Version)

\$LICENCE detects that it is running on a GX screen and automatically chains to the 32-bit, GX \$32LICE utility which proceeds with a GX compatible dialogue. The following screen shows a typical dialogue:



The Browse buttons will only appear if GX is running on the Global server.

In this example:

2800001_111111A.lic	name of the Global Product Licence File
c:\product licence files\	folder containing the Global Product Licence File
d:\	input folder containing the deactivated, unserialised Global Cabinet Files (GCF's)
c:\activated cabinet files\	output folder to hold the activated, serialised Global Cabinet Files (GCF's);

If the input and output folders are the same, you will be warned that any deactivated, unserialised Global Cabinet Files (GCF's) will be deleted by the activation process.

\$LICENCE scans the GLF to activate and re-serialise every Global product listed in the GLF. As well as changing the contents of the GCF's, this re-serialisation procedure also involves renaming the GCF from:

You now have to option to:

- | | |
|---------|-----------------------------------------------------------------------------------------------------------------------------------------------------------------------------------------------------------------------------------------------------------------------------------------------------------|
| Install | This option runs \$SETUP (see section 8) |
| E-mail | This option sends a message to Global Support to confirm that a Global Product Licence File has been used to activate one, or more, Global Cabinet File(s). This option should not normally be required. Only use this option if you have been advised by Global Support to provide a \$LICENCE log file. |
| Exit | Exit \$LICENCE |

If it was **not** possible to activate a Global Cabinet File the reason for the failure (e.g. USER NOT ON SERVICE) will be displayed.

7. The Installation Log File (\$\$INSLOG)

The Installation Log File is fully described in Technical Note IN284. This section just contains sufficient information to create the Installation Log File. **An Installation Log File is mandatory for the installation of Global 3000 Payroll V7.3.**

The Installation Log File (\$\$INSLOG on unit \$\$L) contains full details of every Global product installation (from a GPS CD) and Global product upgrade (from a Global Product Service pack) that has been performed at a site. Thus, it provides a full upgrade-history of the installed Global products at that site. Note that the Installation Log File does **not** contain any details of any "legacy" products installed using \$INSOFT or upgraded via Autozaps.

The Installation Log File, \$\$INSLOG, is maintained, and can be inspected, by the \$INSLOG utility. The \$INSLOG utility is fully described in Technical Note IN284.:

The installation of Global 3000 Payroll V7.3 writes a "product install record to the Installation Log File thus the log file must be available **before** the final phase of the Global 3000 Payroll V7.3 installation is attempted.

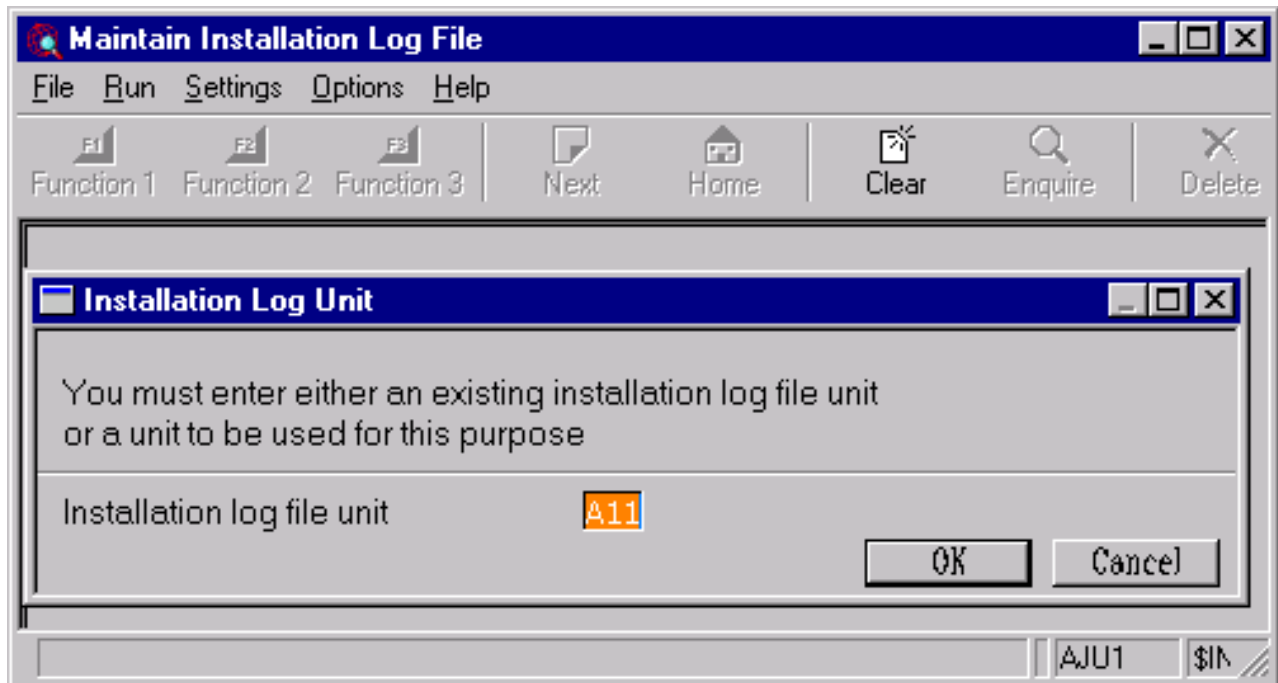
For GSM SP-16 configurations you have 2 options (listed in decreasing order of convenience):

- Create the Installation Log File automatically as part of the \$SETUP installation (see section 8);
- Create the Installation Log File using \$INSLOG;

Important Note: Please do not confuse the Installation Logging mechanism (and the associated logical unit assignment \$\$L) with the GSM Event Logging mechanism (and the associated logical unit assignment \$LG). **The two logging mechanisms are entirely separate.**

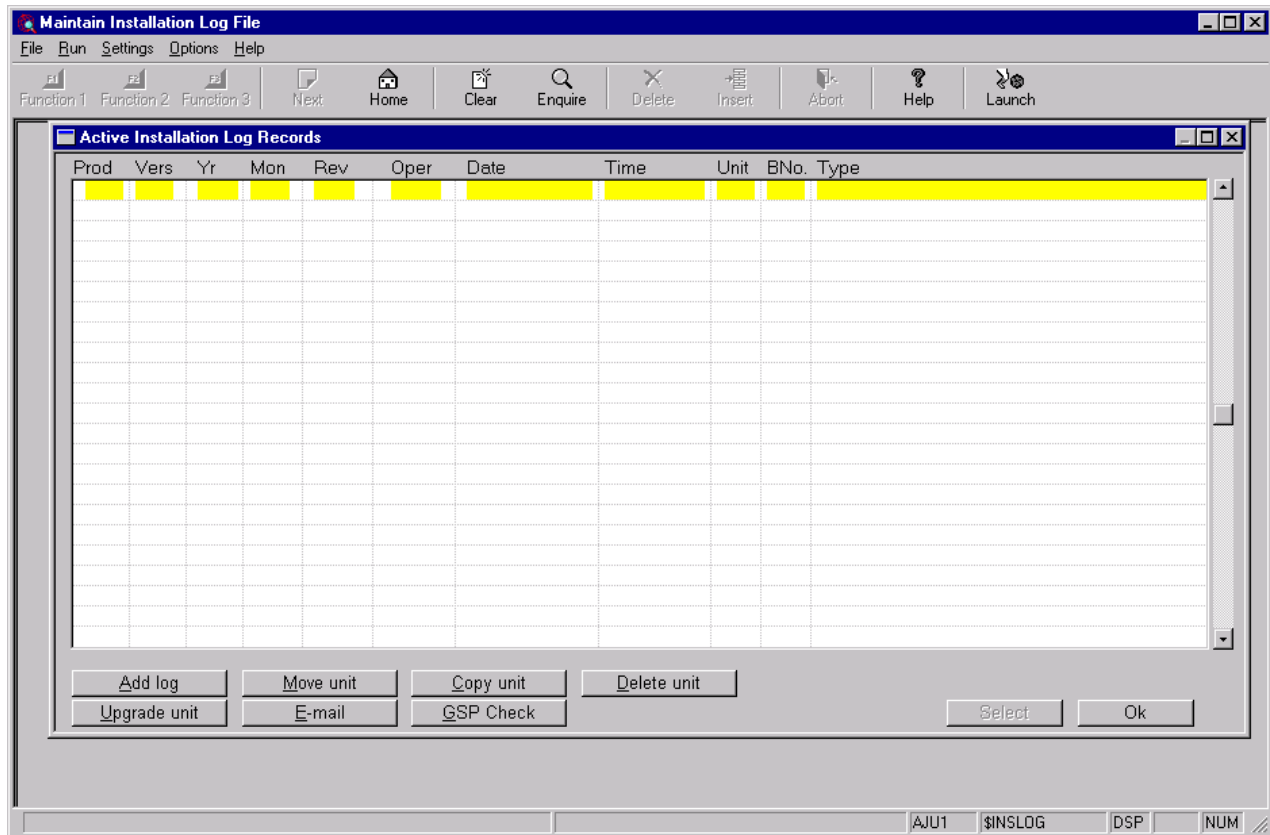
7.1 The Installation Log File (\$\$INSLOG)

\$INSLOG will automatically create an empty \$\$INSLOG file. For example:



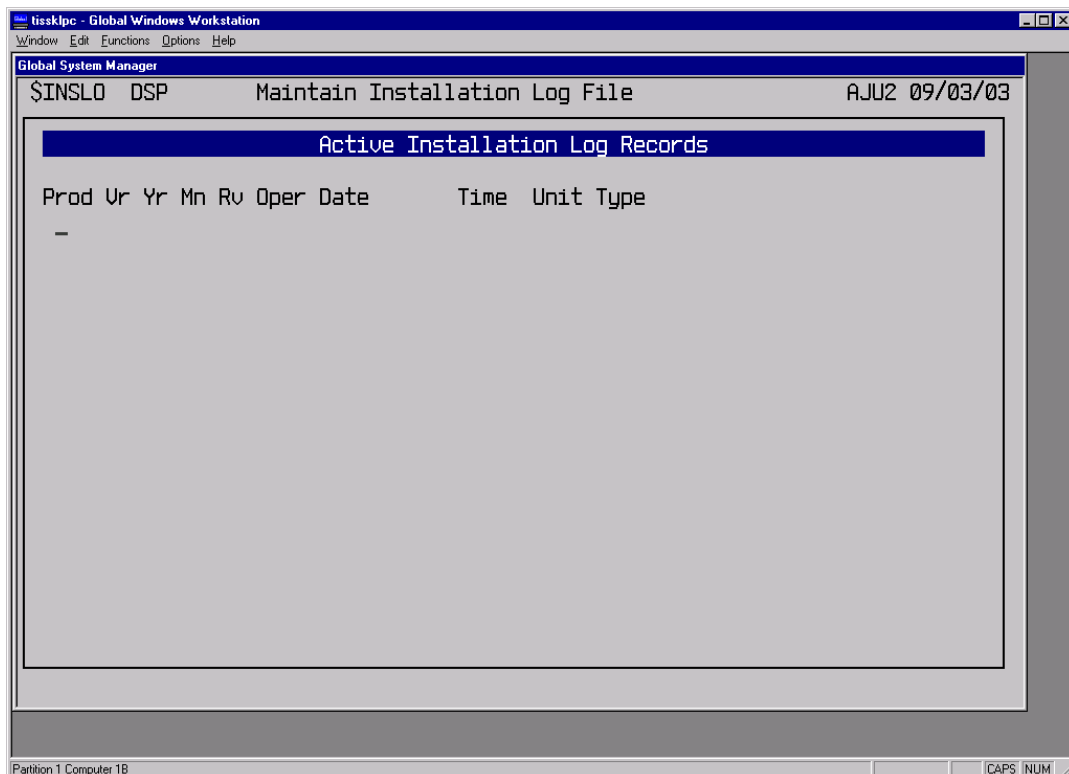
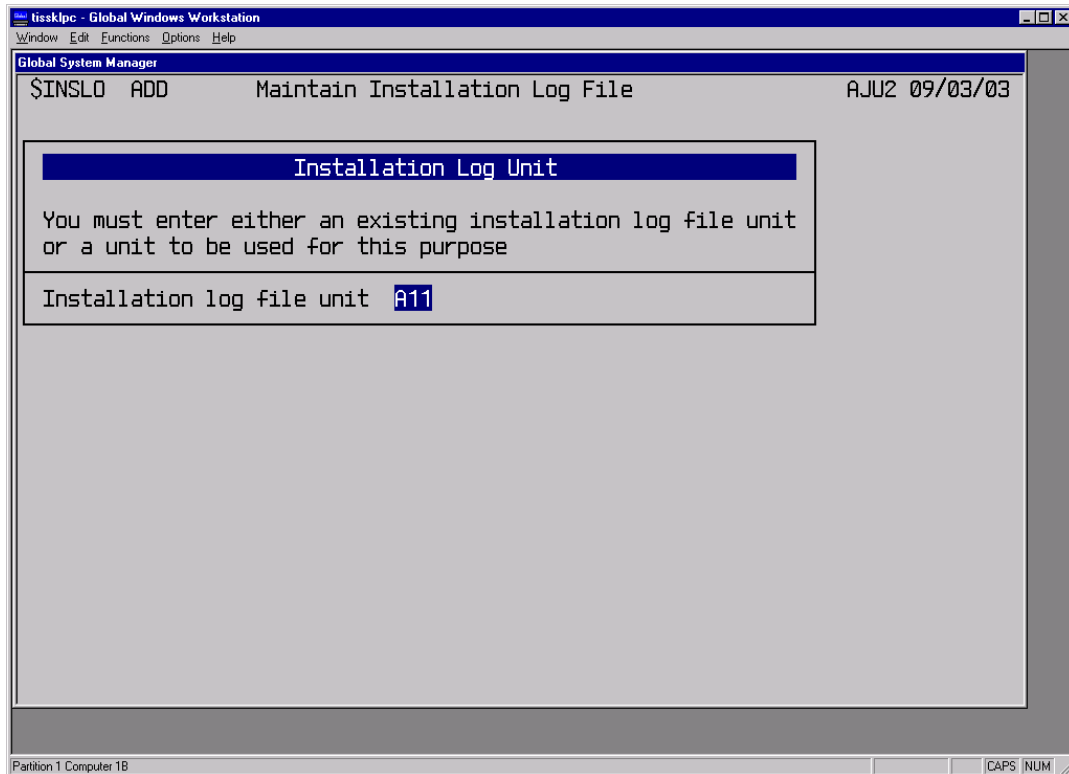
The messages "Allocating installation log file unit" and "Copying installation log file" will briefly appear to indicate the progress of the log file creation.

Once the file creation has completed the normal \$INSLOG window will be displayed showing an empty file:



It will **not** be necessary to maintain the Installation Log at this stage so merely select the OK button to confirm that the log file has been created successfully.

\$INSLOG can be used on non-GX screens. When using \$INSLOG to create an empty Installation Log File on a non GX screen the dialogue is broadly similar to the dialogue for a GX screen as described above:



It is **not** possible to maintain the Installation Log at this stage so key <ESC> to exit \$INSLOG.

Finally, once again, it must be stressed:

- The \$INSLOG stage is not strictly required when installing on a GSM SP-15 configuration;
- The \$INSLOG utility is fully described in Technical Note IN284.

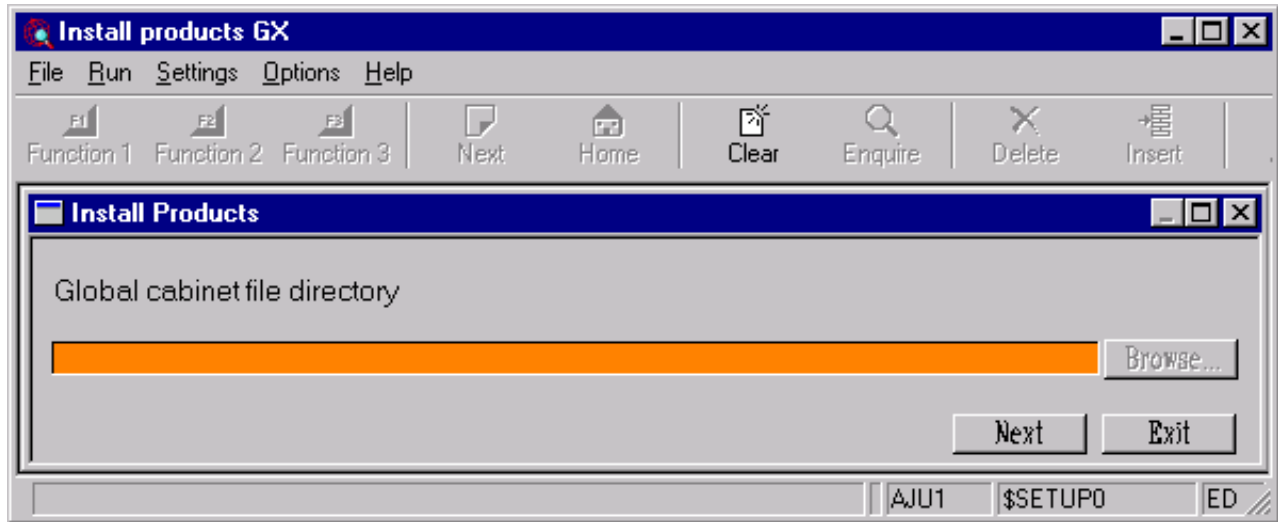
8. Installing from the Global Cabinet File(s)

The precise details of the final phase of the installation depend on the GSM Service pack level and the type of screen being used for the installation:

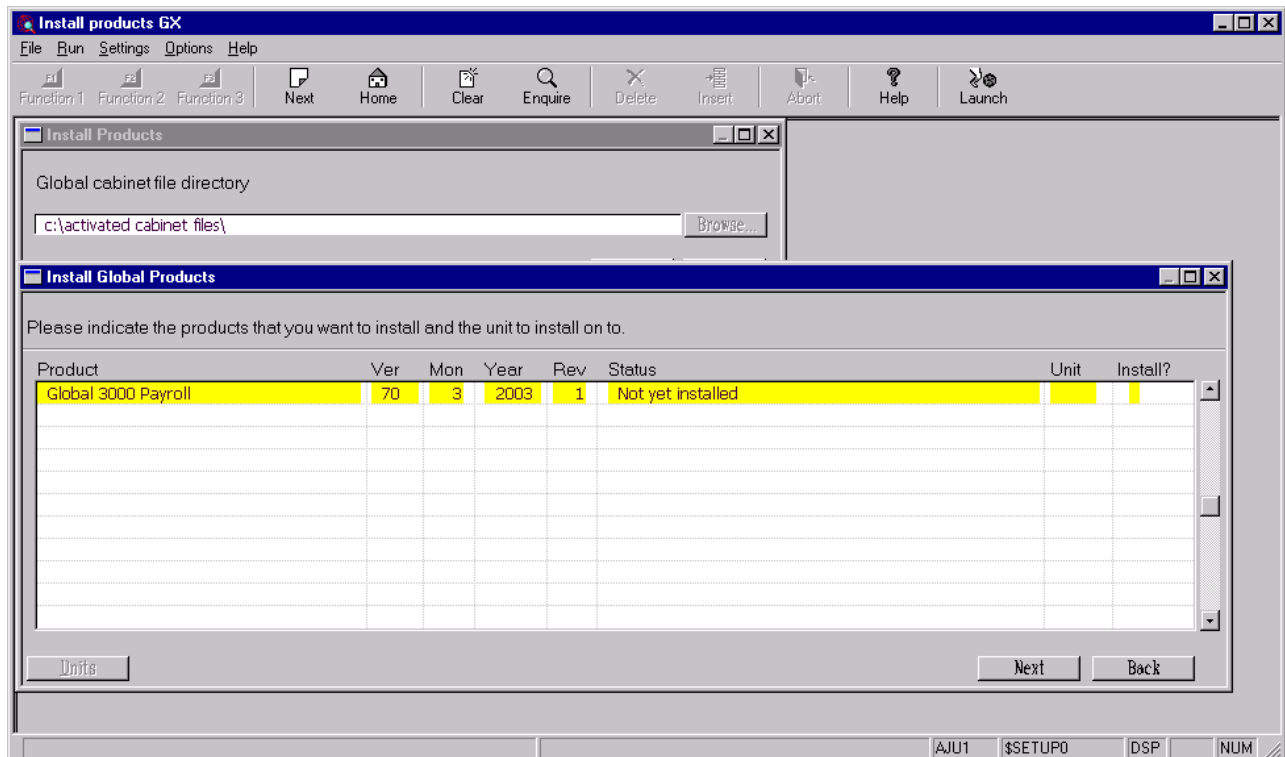
- If you are installing Global 3000 Payroll on GSM SP-16 on a GX screen go to section 8.1;
- If you are installing Global 3000 Payroll on GSM SP-16 on a non-GX screen go to section 8.2;

8.1 \$SETUP on a GX Screen

\$SETUP, and the equivalent \$32INST, commence by displaying the following window:



Specify the folder containing the Activated Cabinet File(s) that were created by \$LICENCE (see section 6) and select the "Next" option. This will result in the following window:



Note to those installers who normally use \$INSTALL to install Global 3000 V5.0: Continue to run \$INSTALL to install Global 3000 V5.0 but use \$SETUP to install Global Payroll V7.3. It is our intention to modify the Global 3000 V5.0 installation process to use

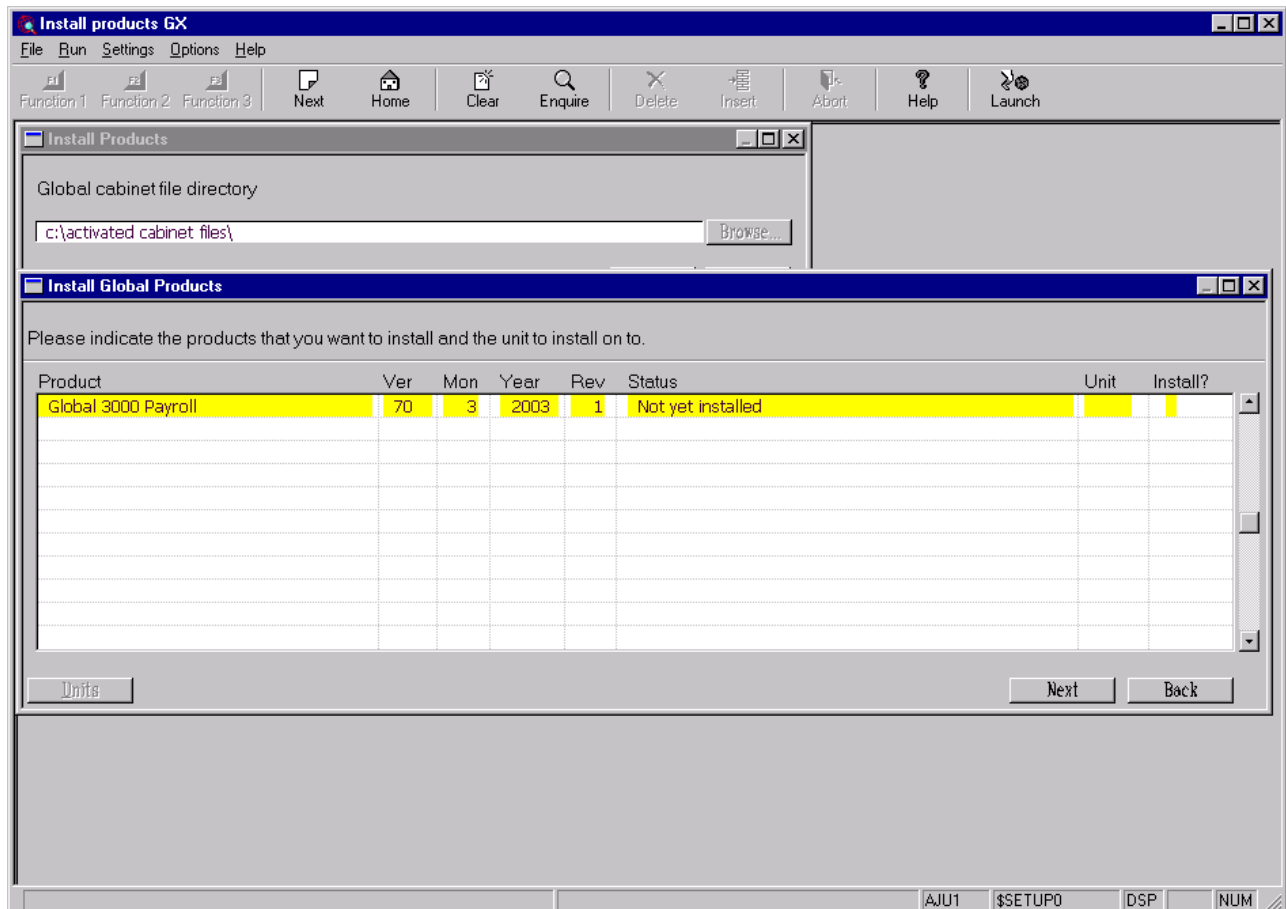
\$SETUP (although no release date for this proposed change is available at the time of writing). If \$INSTALL is run inadvertently and the folder specified only contains activated Global Cabinet Files that are installable using \$SETUP, \$INSTALL will automatically invoke \$SETUP.

As explained in section 7 is **not** necessary to run \$INSLOG (or \$CUS) to create an empty Installation Log File **before** running \$SETUP. If \$SETUP detects that an Installation Log File is not available the following message box will be displayed:

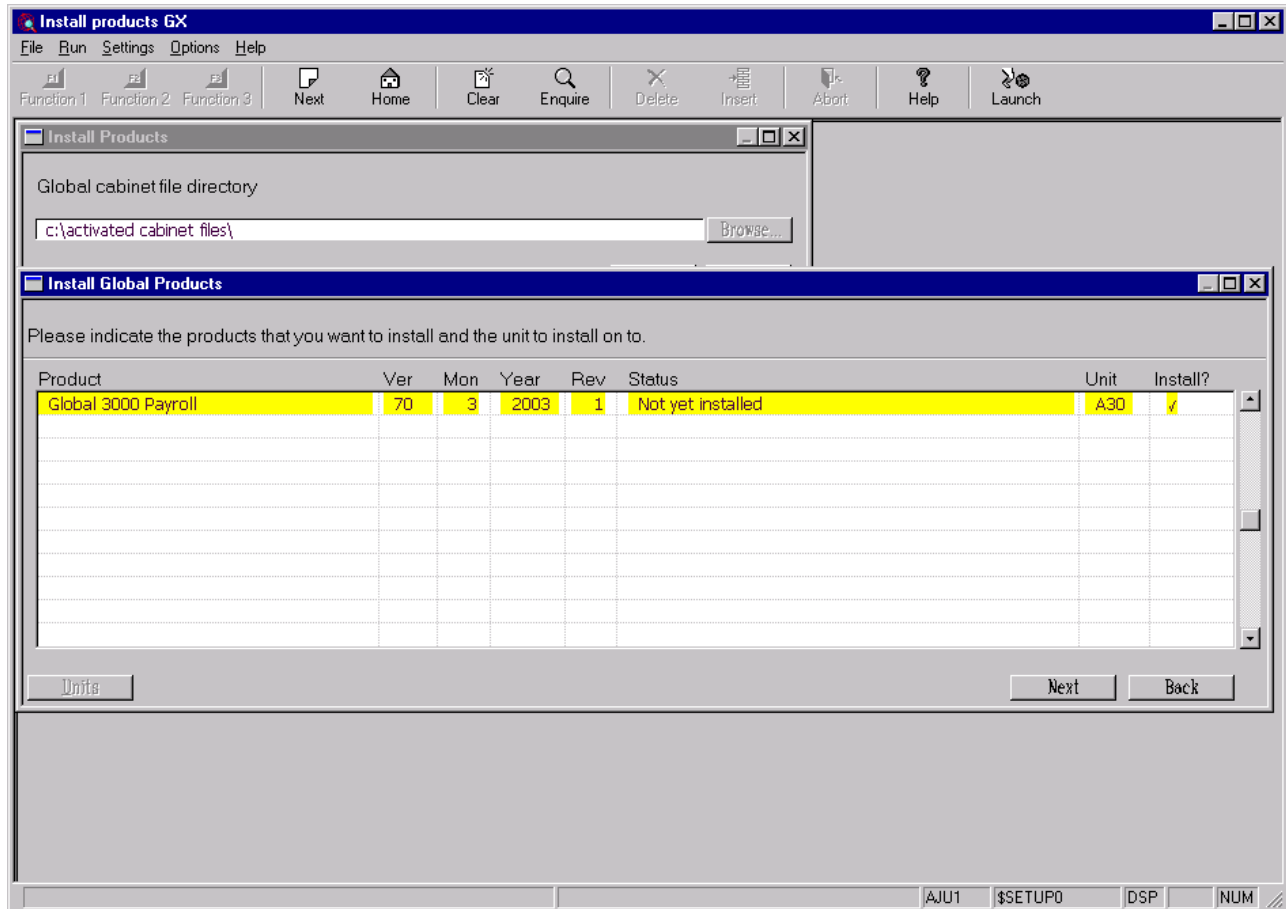


Select "OK" to run \$INSLOG (see section 7.3). When \$INSLOG completes the creation of the Installation Log File the Global Cabinet file directory window will re-appear (see above).

For a fresh installation the Product Selection window will normally contain a single record:



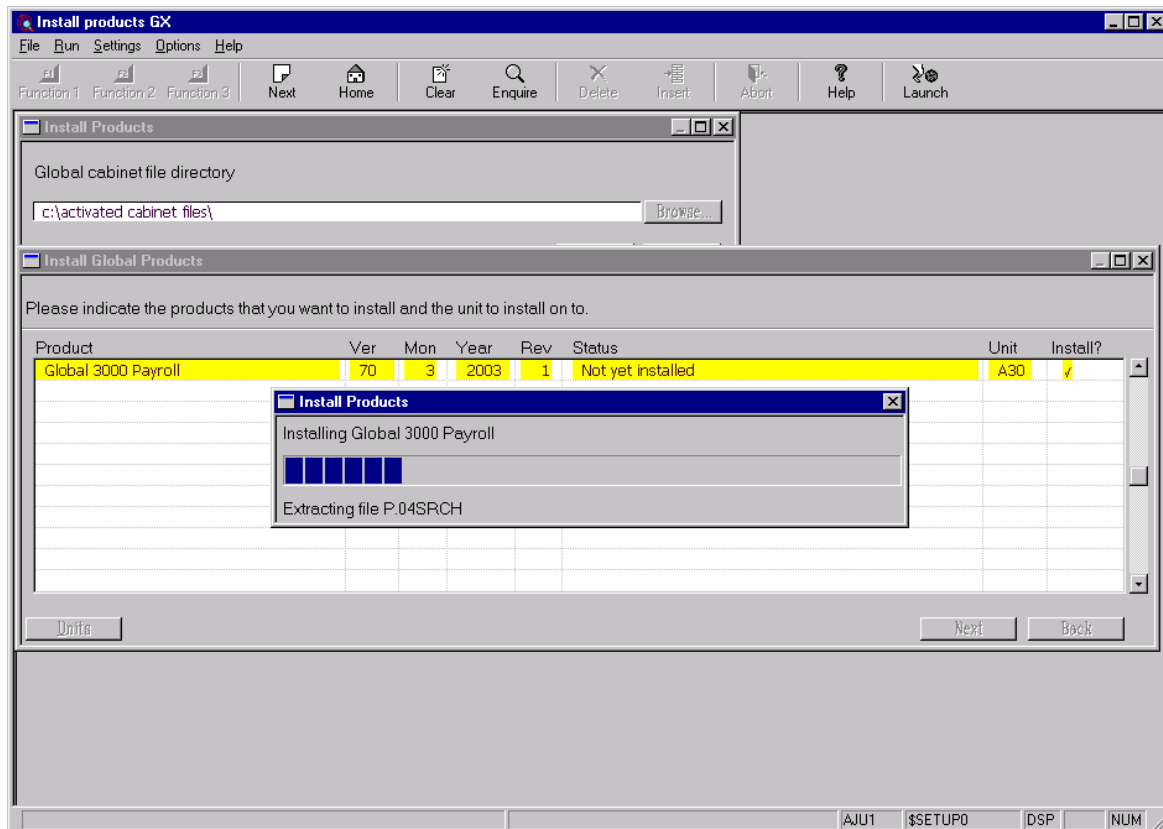
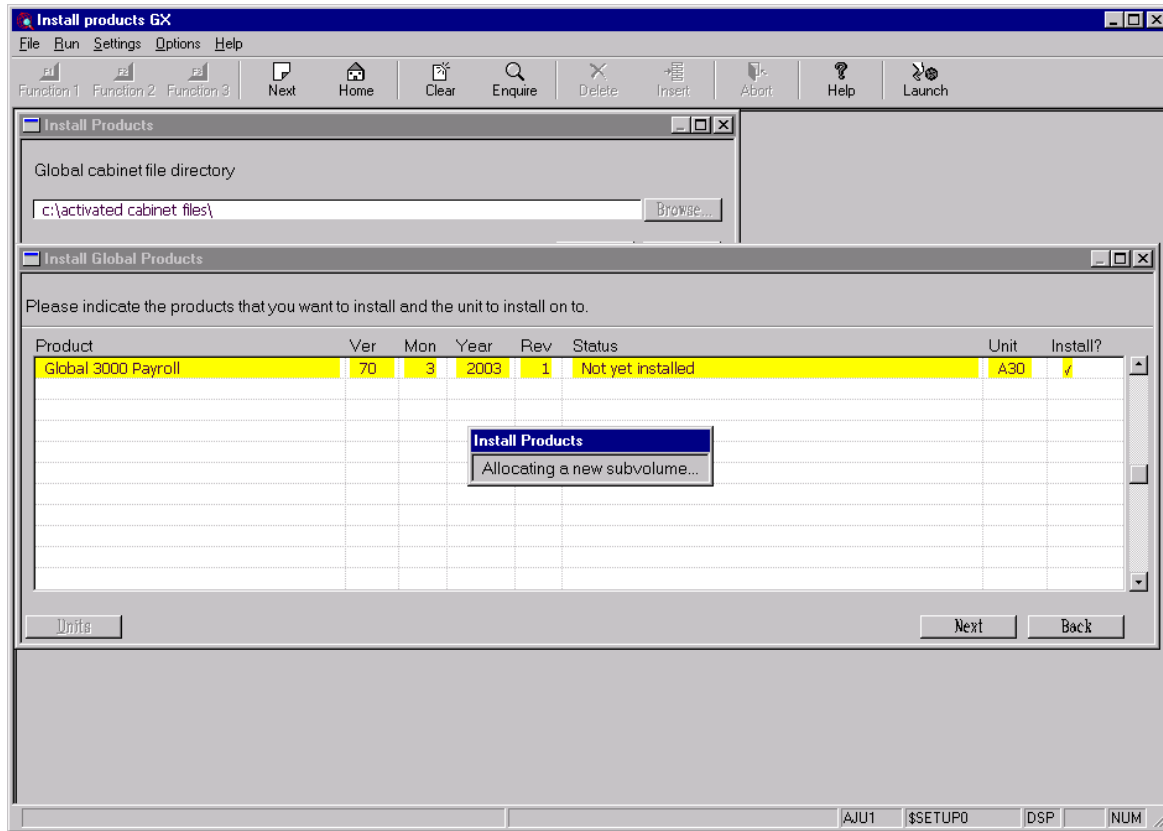
Use the mouse to select the Unit field and enter the required installation unit. Use the mouse to tick the Install? Field. For example to install Payroll on unit A30:



Select "Next" to continue the installation process. The installation will continue by allocating the required program unit (PRPROG) and extracting the various files from the Global Cabinet file into the nascent program unit.

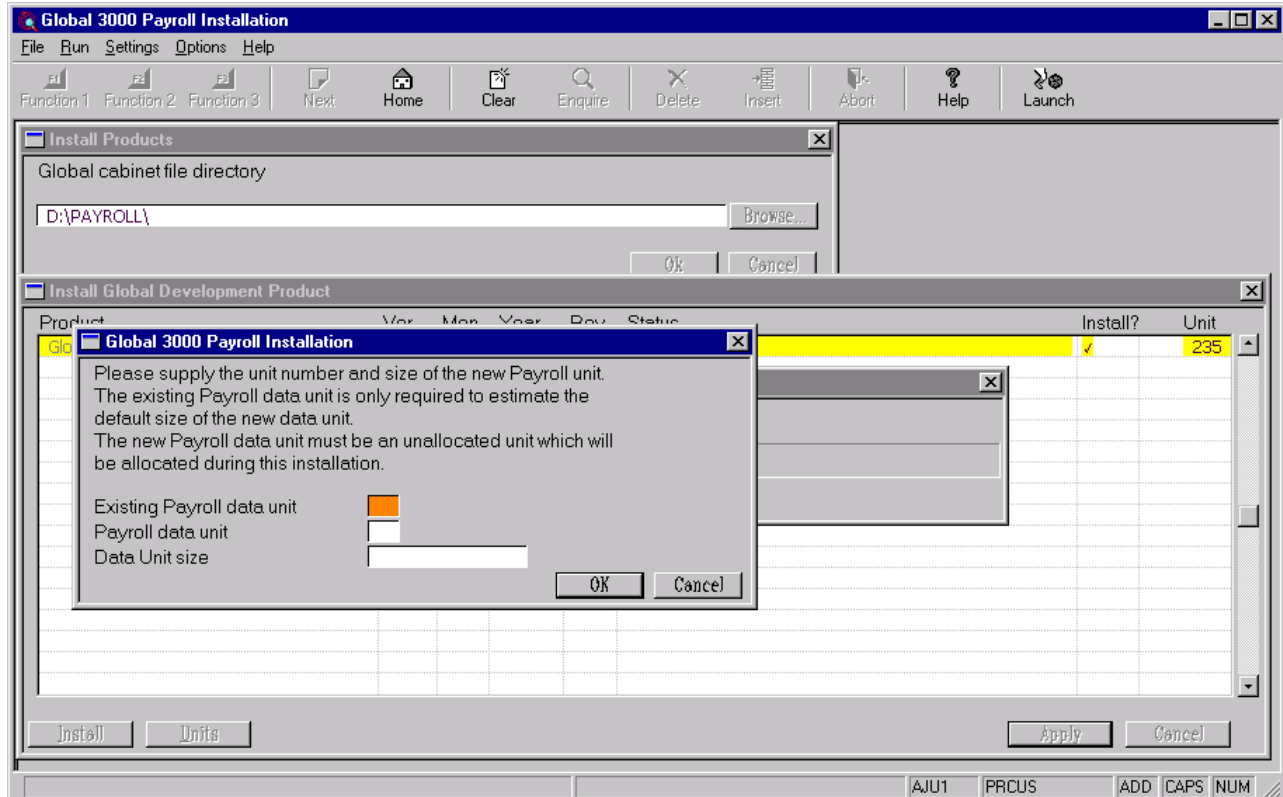
A number of messages and windows will appear during the installation. For example:

Installing 32-bit Global Applications Part-2 (\$LICENCE and \$SETUP)



When all the required Global files have been extracted from the Global Cabinet File the generic phase of the installation completes and the product-specific phase commences. **Important Note:** Some of the following screen shots were taken from a "release candidate" version of Global 3000 Payroll rather than the final released version. Consequently, some of the windows **may** appear slightly different from the final release software.

A window will appear allowing you to specify the location of the new Global Payroll data unit and its size:



Existing Payroll data unit

The location of the existing (i.e. V6.8) Payroll data unit is optional and is merely used to calculate the default size of the Global 3000 Payroll data unit;

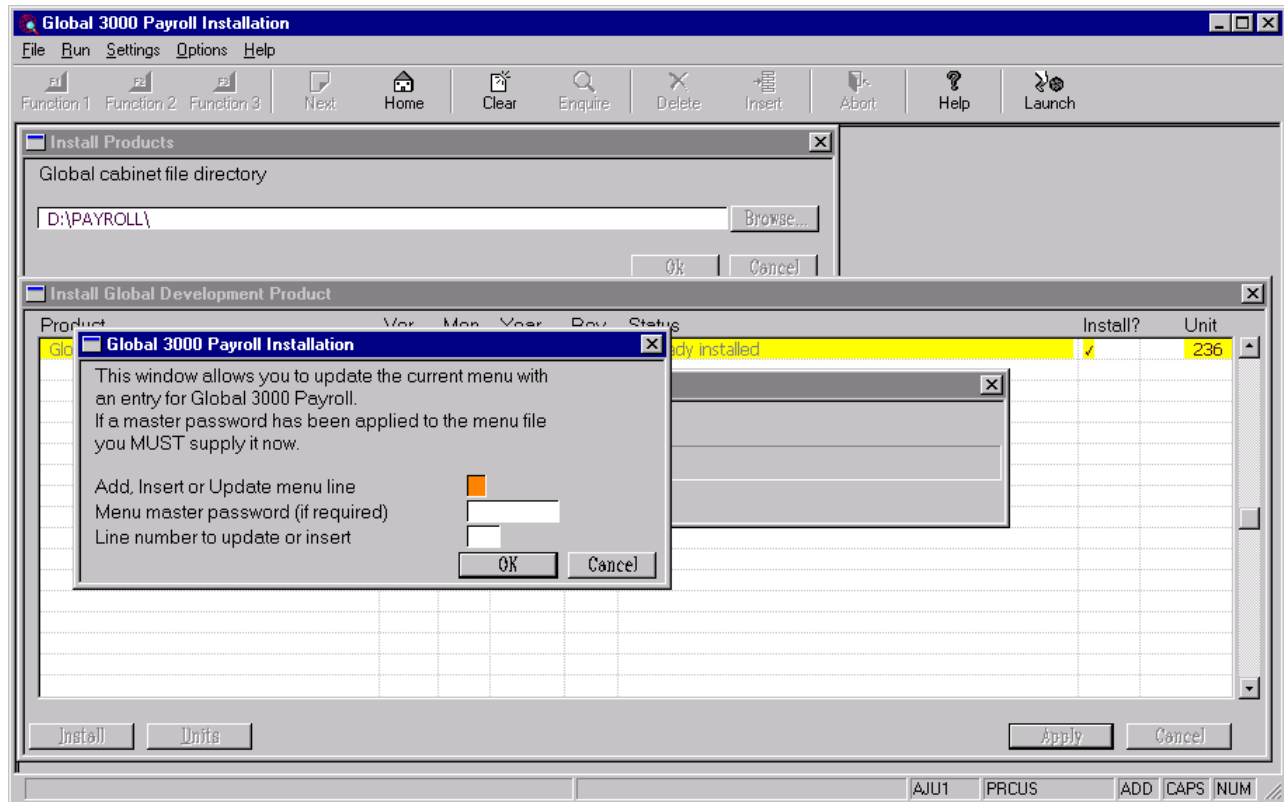
Payroll data unit

This unit **must** be supplied. The data unit must be an un-allocated unit. The Global Payroll installation will allocate the unit of the required size;

Data Unit Size

This value **must** be supplied. If an Existing Payroll data unit has been supplied a default size will be offered, otherwise a default of 100Mb will be used.

After a short delay, during which the new data unit is being allocated, the following window will appear **BUT ONLY IF THE 32-BIT MENU HANDLER, \$MENU32, WAS RUNNING WHEN \$SETUP WAS INITIATED** (see below for more details):

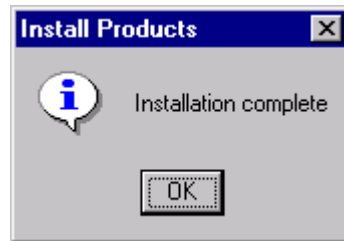


This window allows you to add a new menu line, insert a new menu line or update an existing menu line for Global 3000 Payroll. The update applies to the current menu file that was active when \$SETUP was initiated. If the menu file includes a Master Password, the password must be supplied in this window. The PRD, PRM and PRR unit assignments are all set to the nascent Global Payroll data unit.

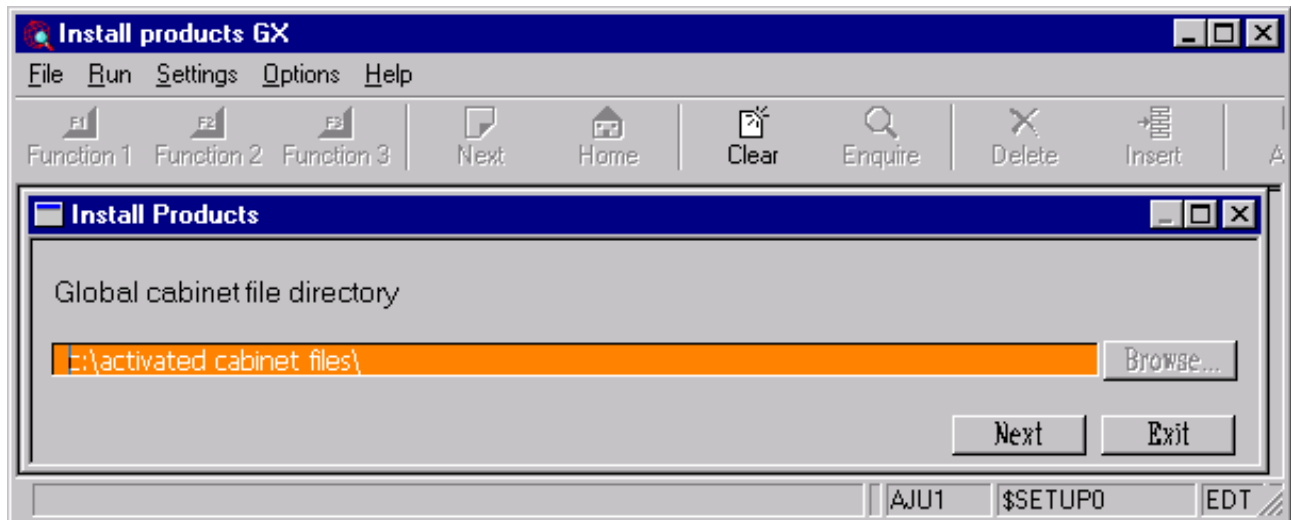
If you do not want to add a menu entry at this point just select the "OK" button.

The window that allows the current menu to be updated will only appear if the 32-bit Menu Handler was running when \$SETUP was initiated (i.e. the window will **not** appear if the 16-bit Menu Handler was running or if \$SETUP is run from the READY: prompt). If this window does not appear the menu entry for Global 3000 Payroll must be added "by hand" using either MN (for 16-bit menu files) or \$MN32 (for 32-bit menu files). The unit assignments required by Global 3000 Payroll are described in the **UNIT ASSIGNMENTS** section of the Global 3000 Payroll Release Notice.

The installation is now complete. The following dialogue box will appear:

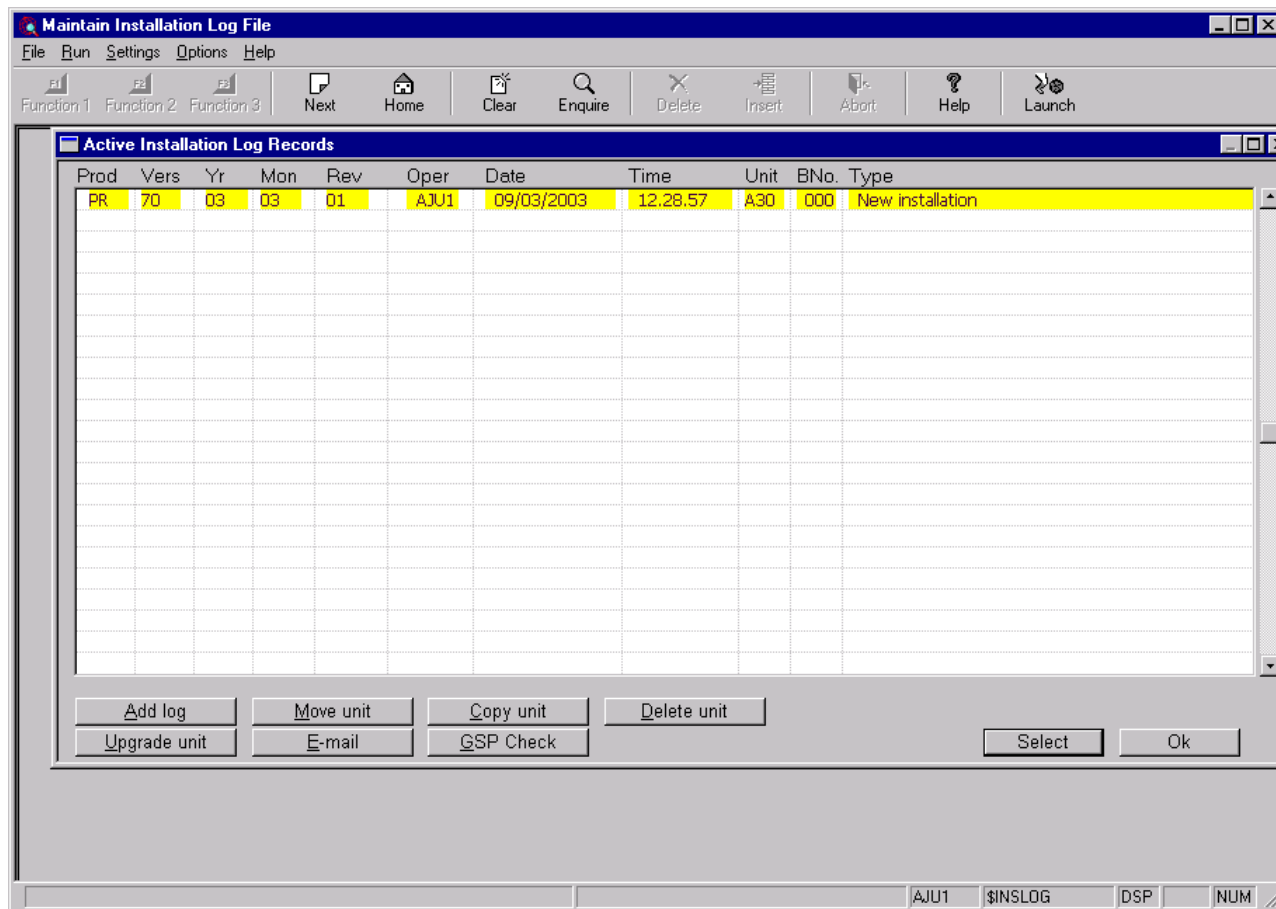


Click the "OK" button and the Global Cabinet file directory window will re-appear.



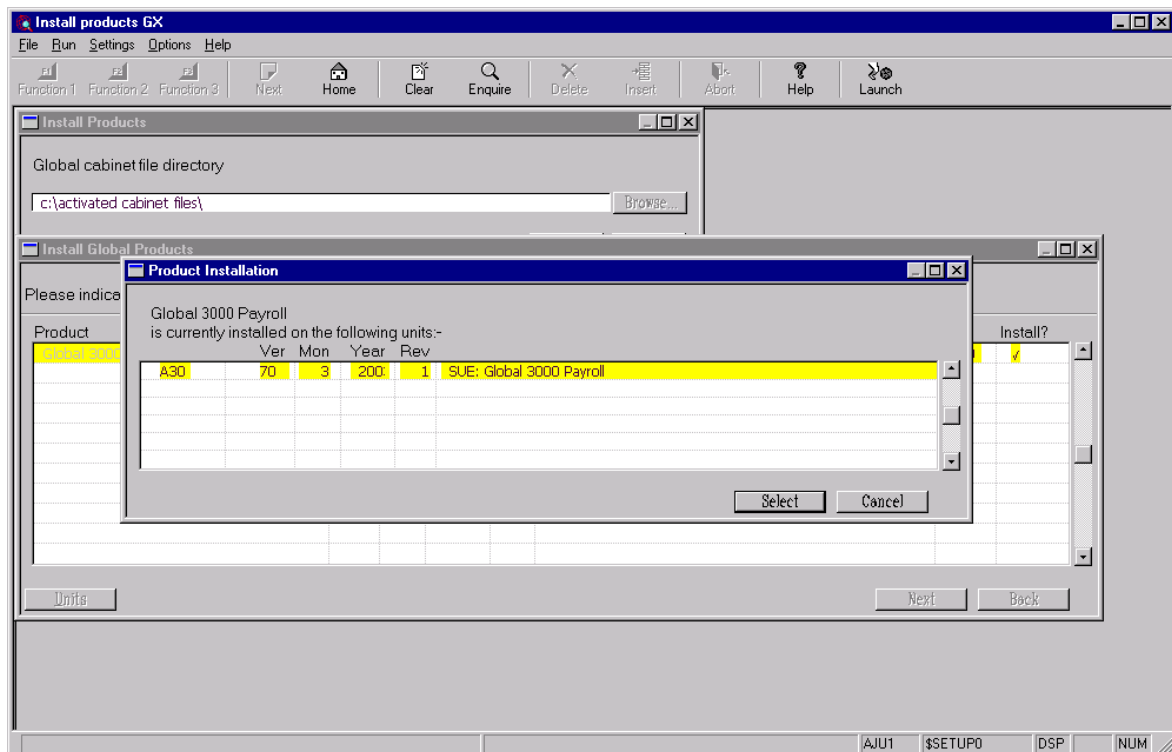
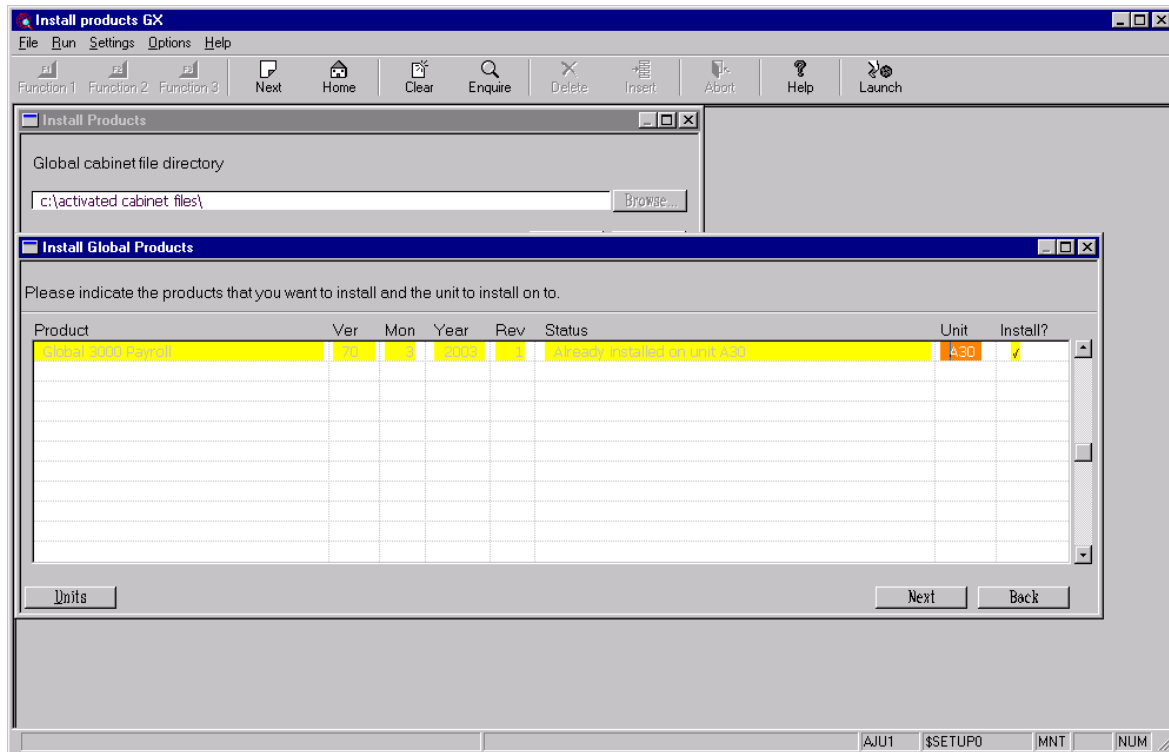
Select "Exit" to exit the installation process.

At this stage \$INSLOG can be used to confirm that the installation has completed successfully:



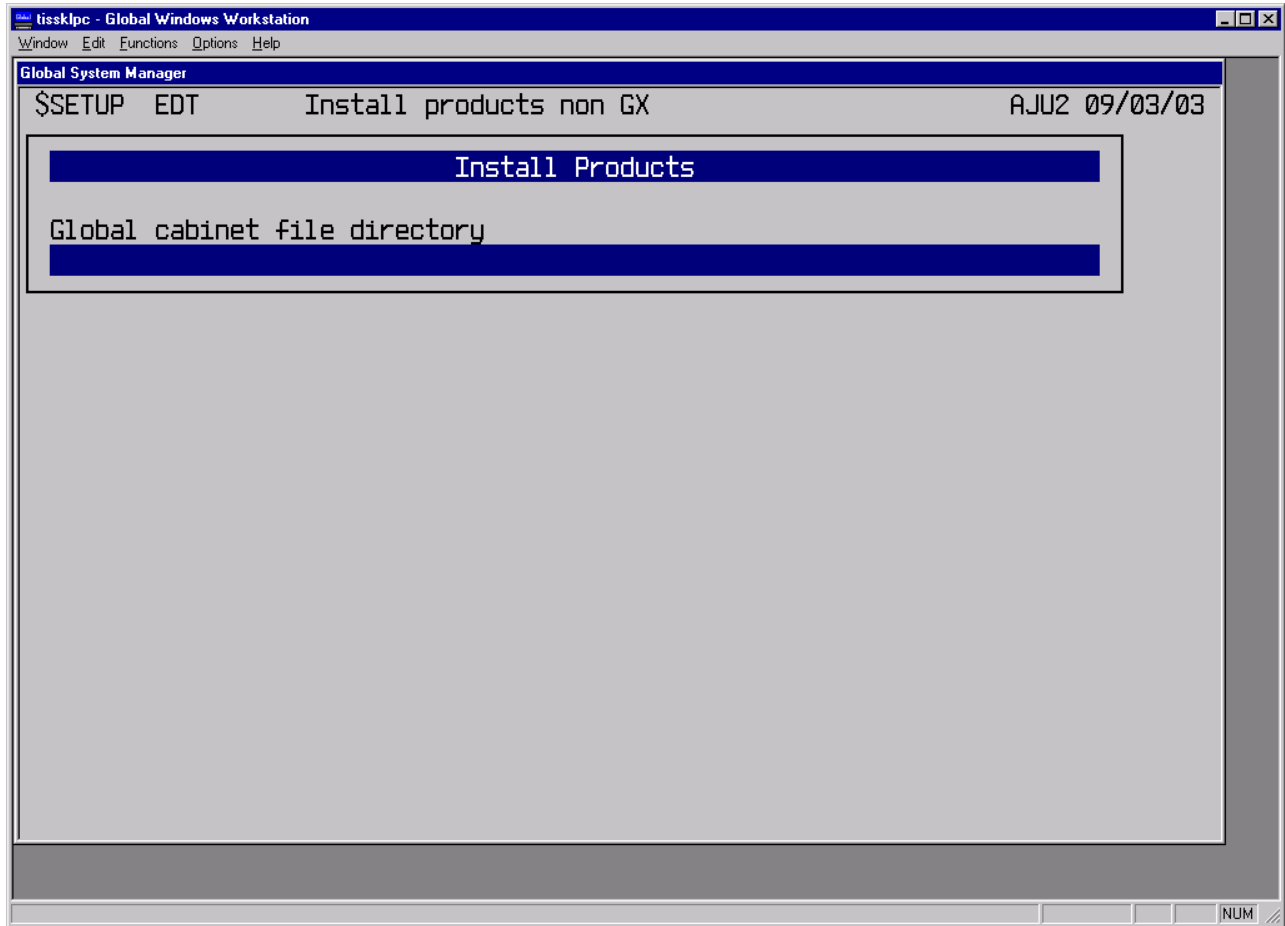
Select "OK" to exit \$INSLOG once the installation information has been digested.

When using \$SETUP to re-install a product, or to install a subsequent product the "Units" button can be used obtain a list of the units that already contain installed products. For example:



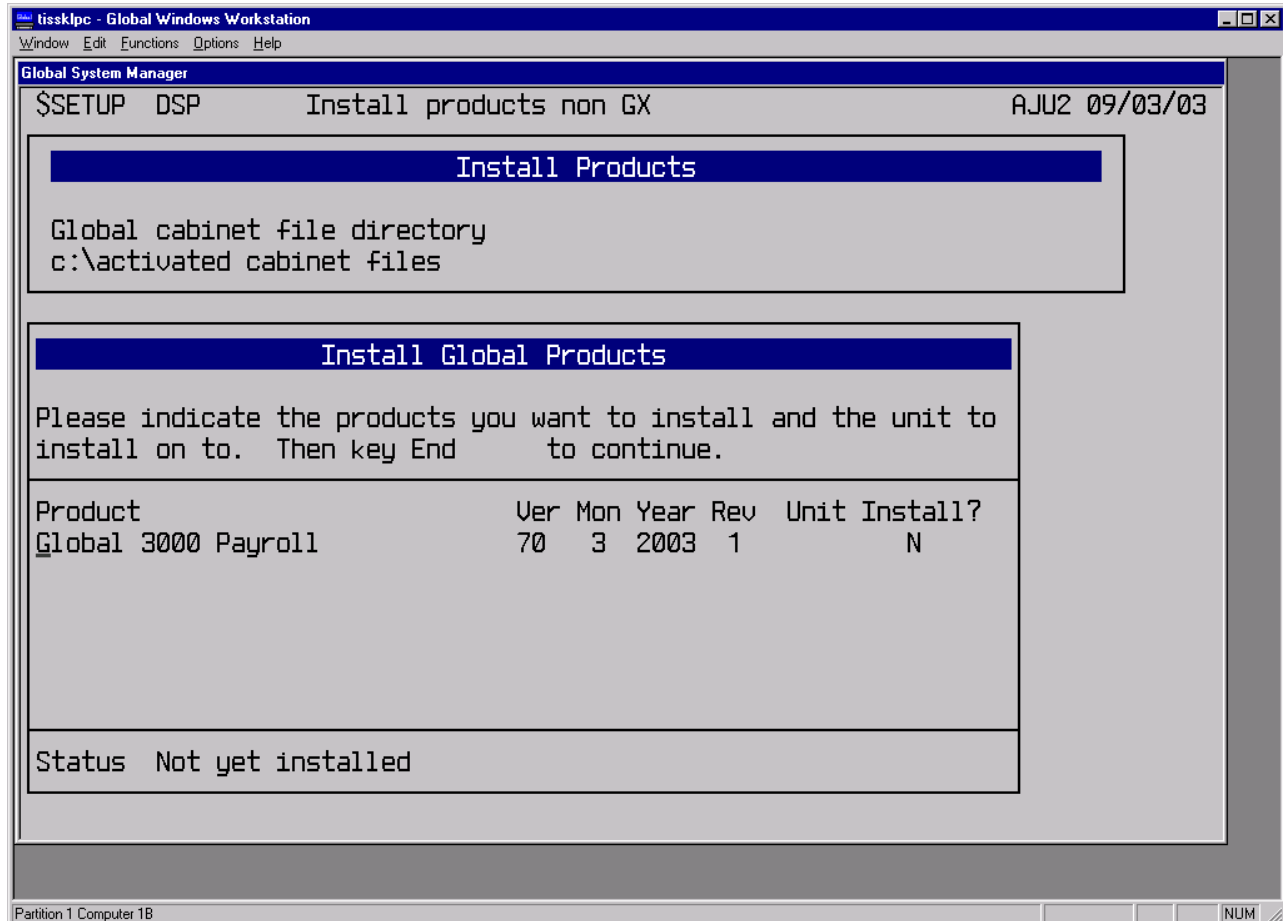
8.2 \$SETUP on a non-GX Screen

Either \$SETUP (or the equivalent \$32INST) commence by displaying the following window:



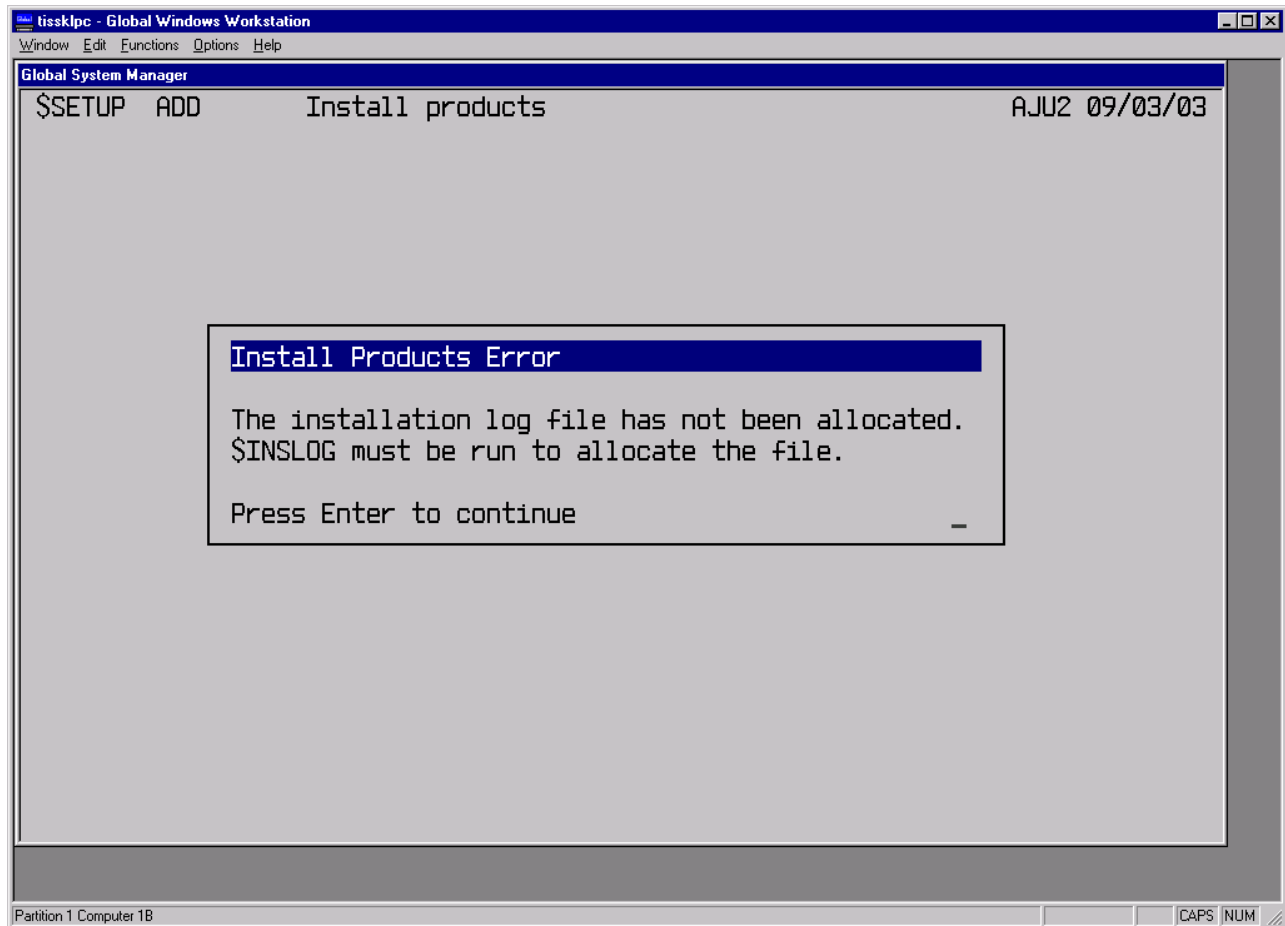
Important note: For some resellers, this may be your first exposure to the Speedbase Presentation Manager screen and keyboard usage. Please refer to Chapter 2 of man81speedbasepm.doc (which is distributed on the GPS CD) for full details.

Specify the folder containing the Activated Cabinet File(s) that were created by \$LICENCE (see section 6) and select the "Next" option. This will result in the following window:



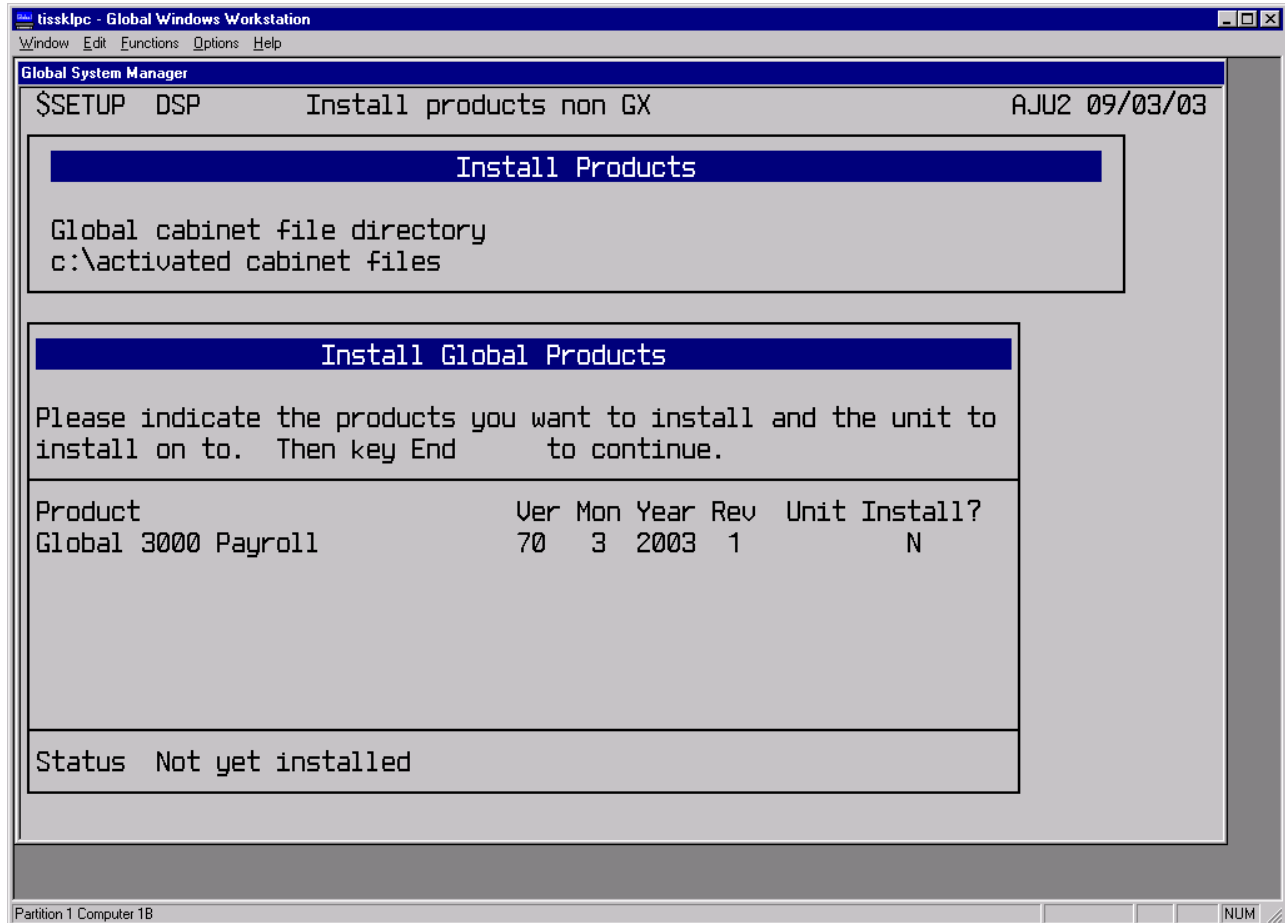
Note to those installers who normally use \$INSTALL to install Global 3000 V5.0: Continue to run \$INSTALL to install Global 3000 V5.0 but use \$SETUP to install Global Payroll V7.3. It is our intention to modify the Global 3000 V5.0 installation process to use \$SETUP (although no release date for this proposed change is available at the time of writing). If \$INSTALL is run inadvertently and the folder specified only contains activated Global Cabinet Files that are installable using \$SETUP, \$INSTALL will automatically invoke \$SETUP.

As explained in section 7, it is **not** necessary to run \$INSLOG (or \$CUS) to create an empty Installation Log File **before** running \$SETUP. If \$SETUP detects that an Installation Log File is not available the following window will be displayed:



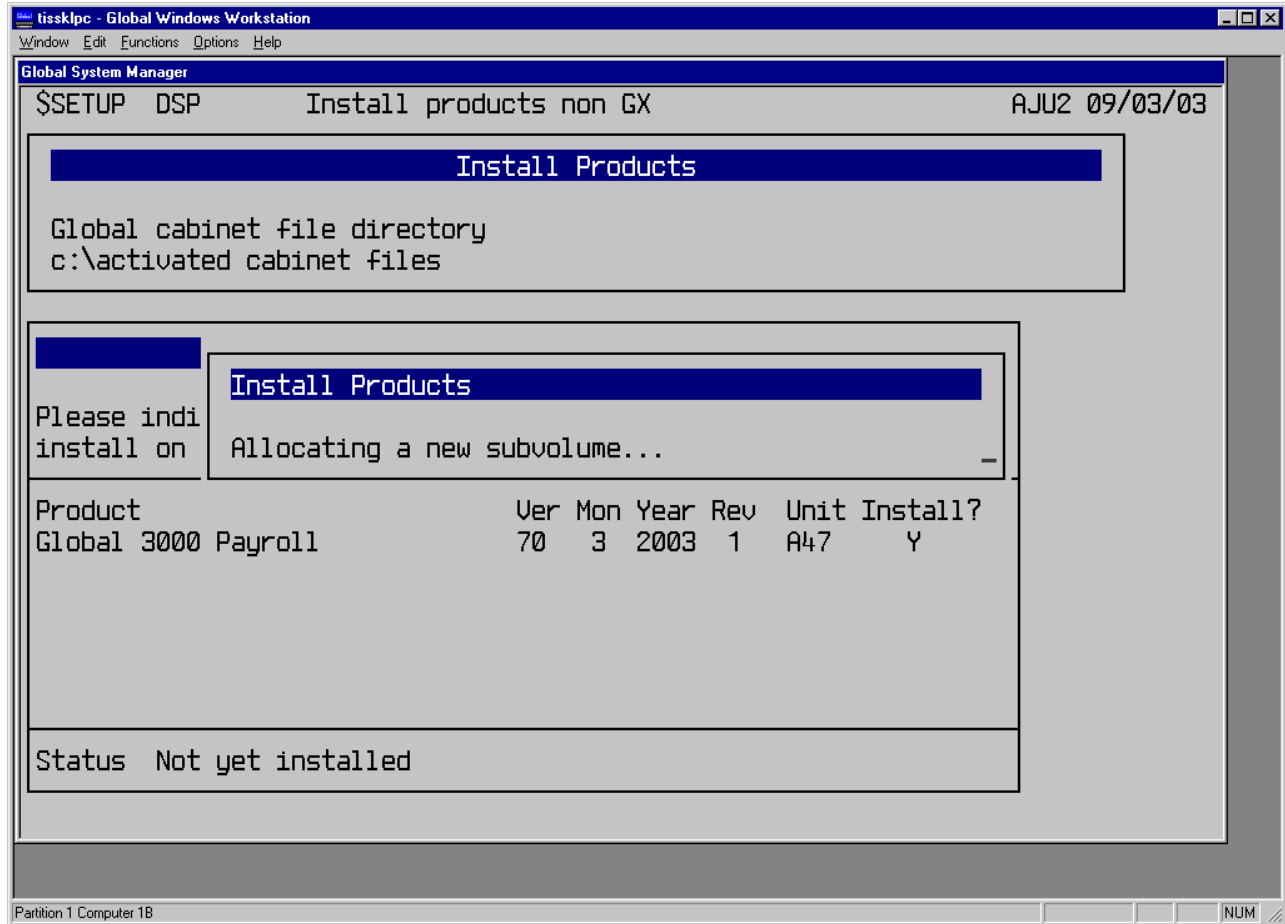
Key <CR> to run \$INSLOG (see section 7.3). When \$INSLOG completes the creation of the Installation Log File the Global Cabinet file directory window will re-appear (see above).

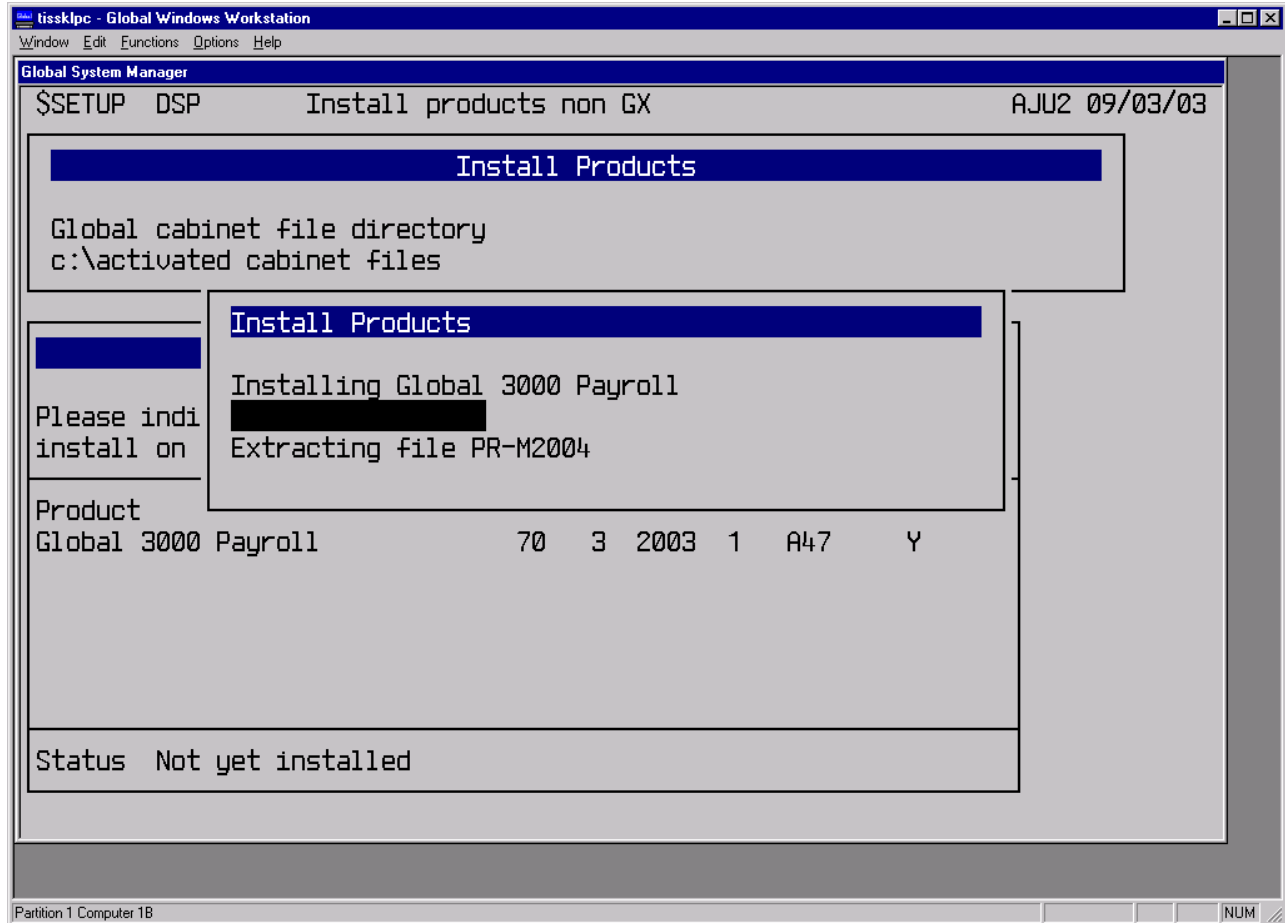
For a fresh installation the Product Selection window will normally just contain a single record:



Key <CR> to select the Unit field and enter the required installation unit followed by <CR>. Change the "N" in the Install? Field to a "Y". Press the Speedbase "Go to next window" function key (normally the "End" key) to continue the installation process. The installation will continue by allocating the required program unit (PRPROG) and extracting the various files from the Global Cabinet file into the nascent program unit.

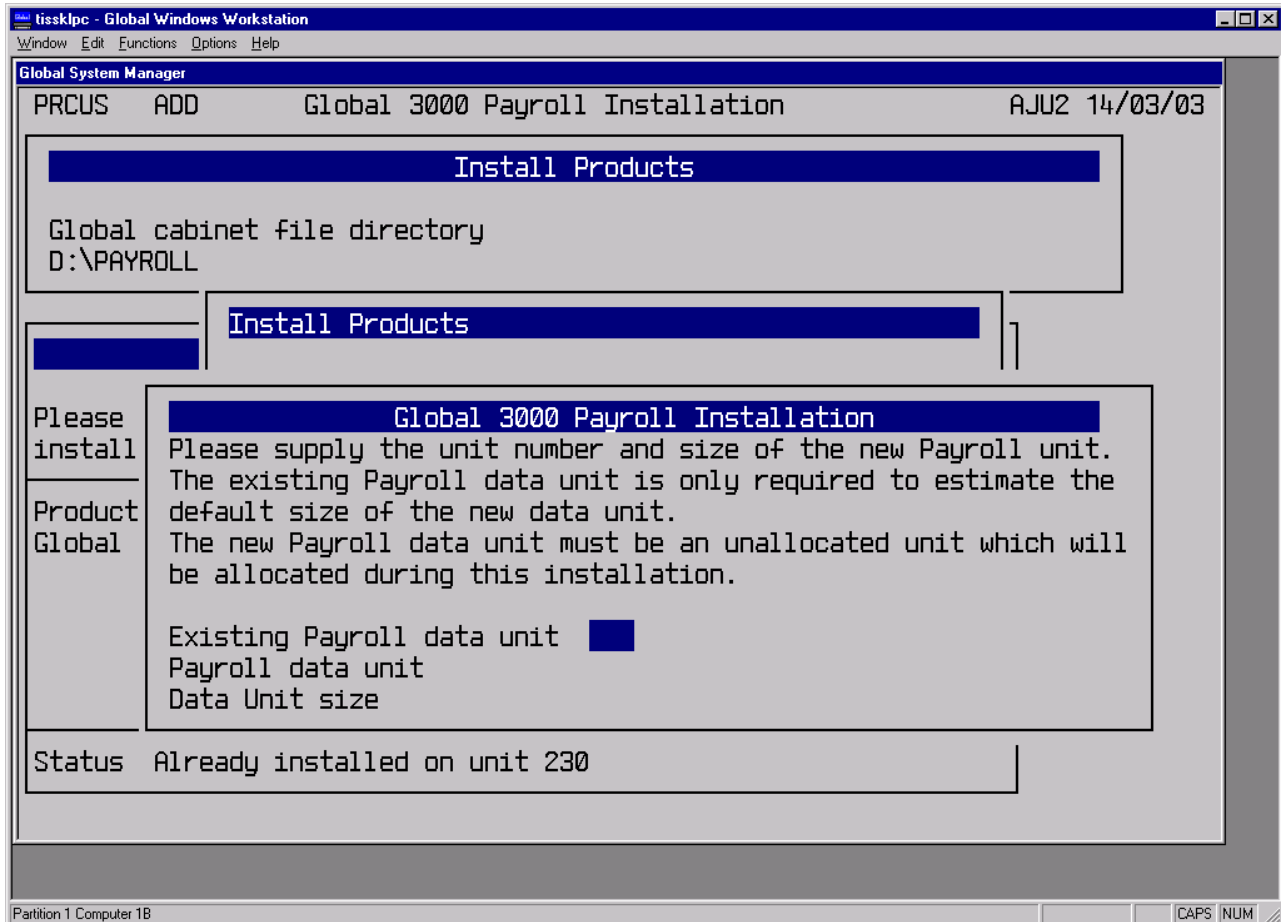
A number of messages and windows will appear during the installation. For example:





When all the required Global files have been extracted from the Global Cabinet File the generic phase of the installation completes and the product-specific phase commences. **Important Note:** Some of the following screen shots were taken from a "release candidate" version of Global 3000 Payroll rather than the final released version. Consequently, some of the windows **may** appear slightly different from the final release software.

A window will appear allowing you to specify the location of the new Global Payroll data unit and its size:



Existing Payroll data unit

The location of the existing (i.e. V6.8) Payroll data unit is optional and is merely used to calculate the default size of the Global 3000 Payroll data unit;

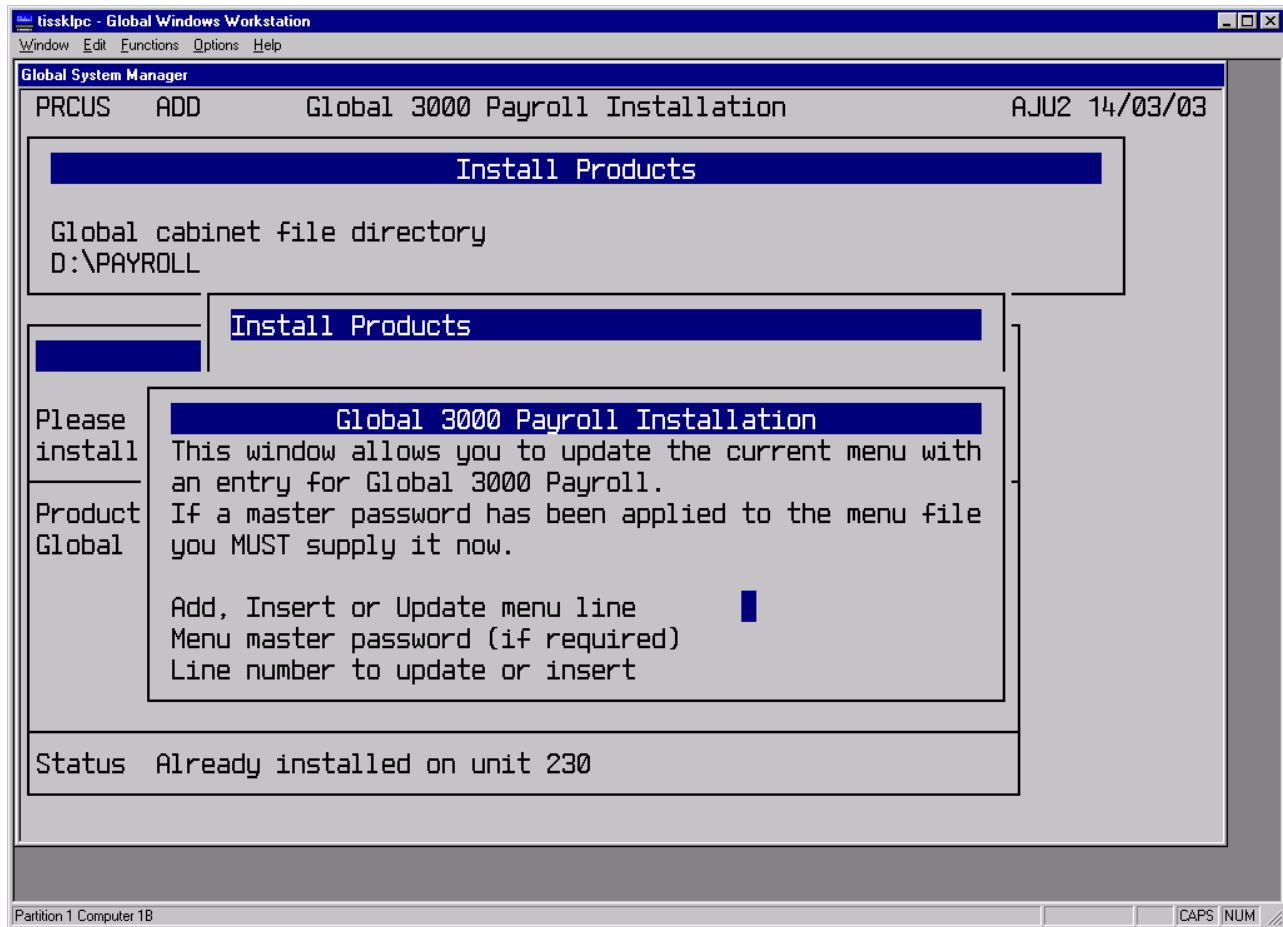
Payroll data unit

This unit **must** be supplied. The data unit must be an un-allocated unit. The Global Payroll installation will allocate the unit of the required size;

Data Unit Size

This value **must** be supplied. If an Existing Payroll data unit has been supplied a default size will be offered, otherwise a default of 100Mb will be used.

After a short delay, during which the new data unit is being allocated, the following window will appear **BUT ONLY IF THE 32-BIT MENU HANDLER, \$MENU32, WAS RUNNING WHEN \$SETUP WAS INITIATED** (see below for more details):

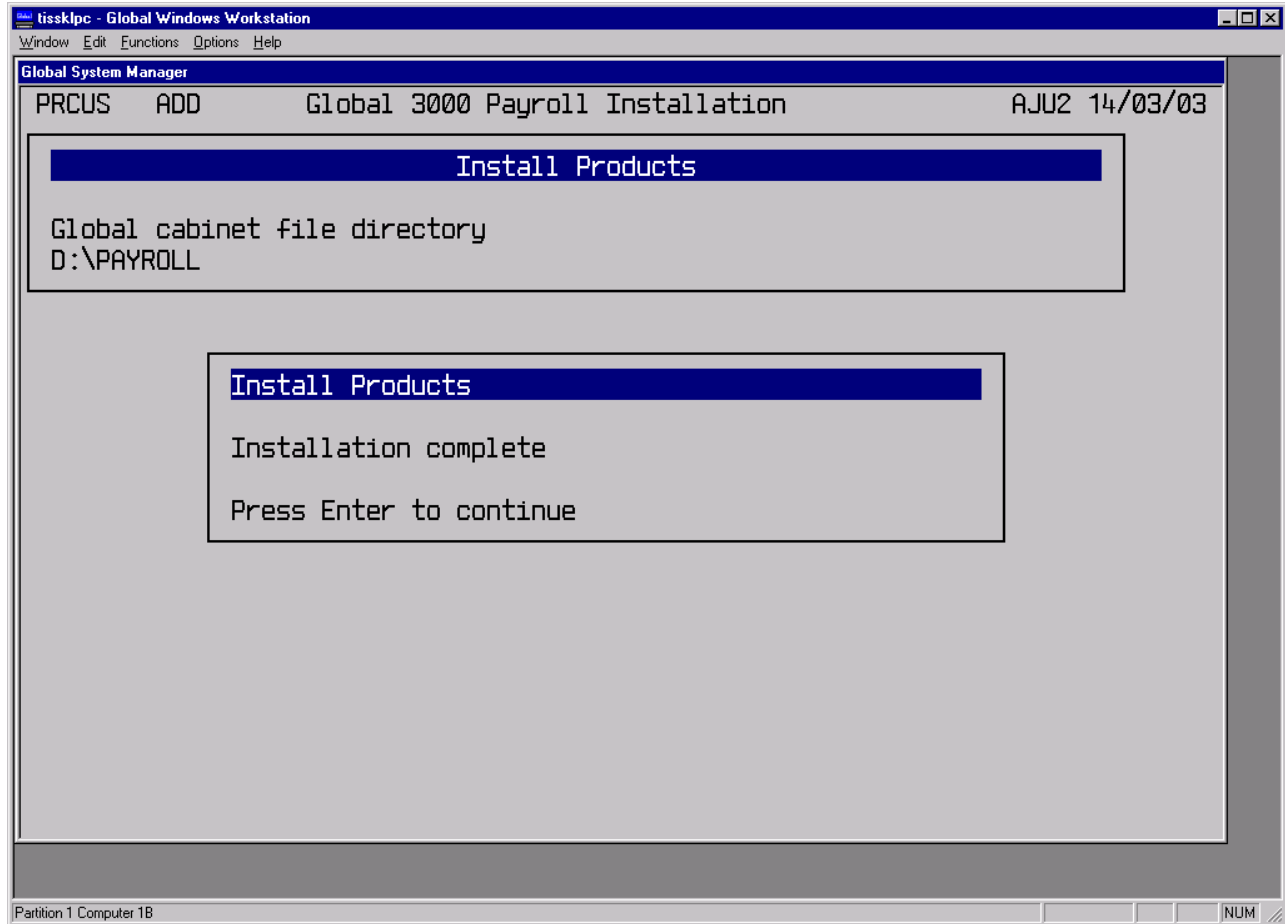


This window allows you to add a new menu line, insert a new menu line or update an existing menu line for Global 3000 Payroll. The update applies to the current menu file that was active when \$SETUP was initiated. If the menu file includes a Master Password, the password must be supplied in this window. The PRD, PRM and PRR unit assignments are all set to the nascent Global Payroll data unit.

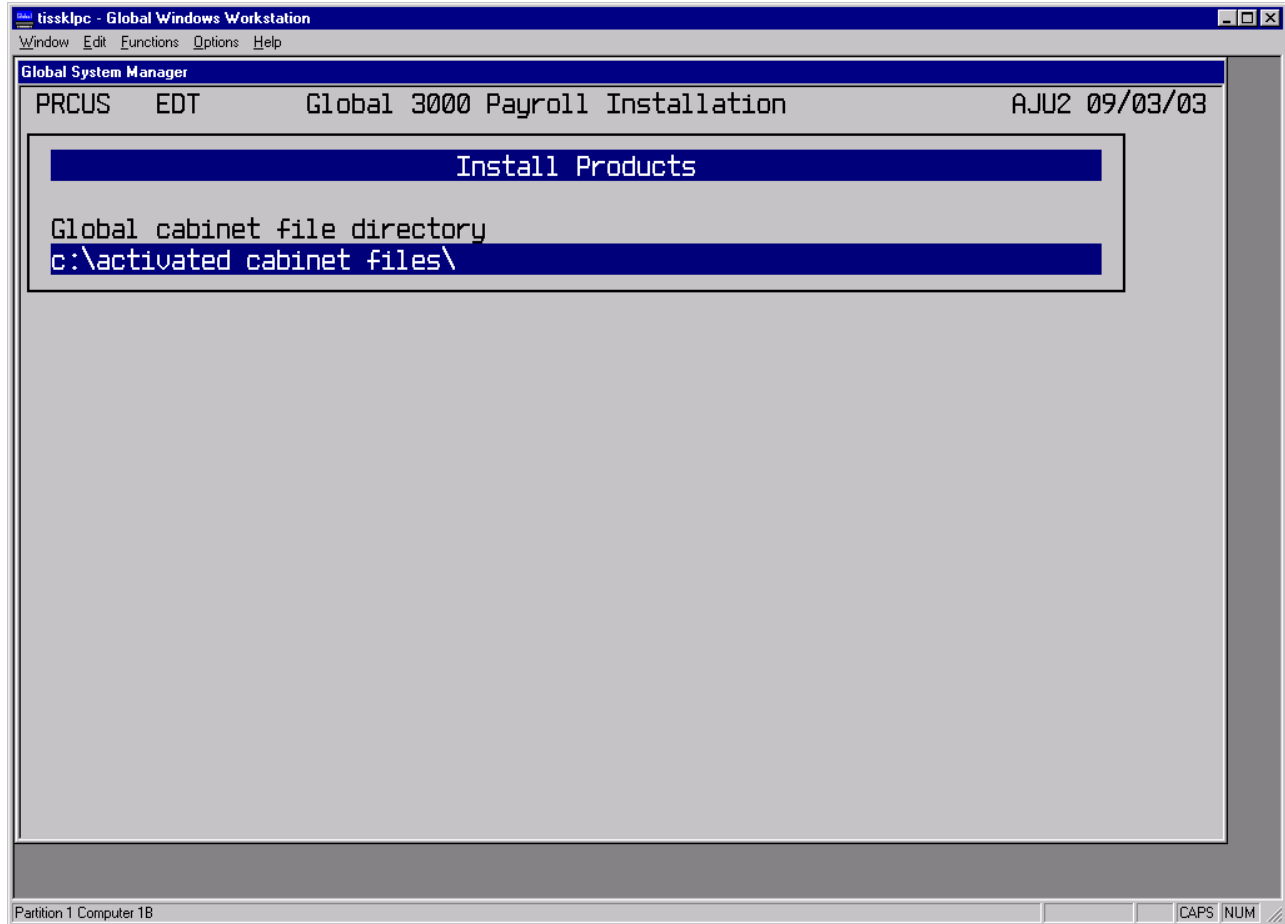
If you do not want to add a menu entry at this point just key <ESC>.

The window that allows the current menu to be updated will only appear if the 32-bit Menu Handler was running when \$SETUP was initiated (i.e. the window will **not** appear if the 16-bit Menu Handler was running or if \$SETUP is run from the READY: prompt). If this window does not appear the menu entry for Global 3000 Payroll must be added "by hand" using either MN (for 16-bit menu files) or \$MN32 (for 32-bit menu files). The unit assignments required by Global 3000 Payroll are described in the **UNIT ASSIGNMENTS** section of the Global 3000 Payroll Release Notice.

The installation is now complete. The following window will appear:

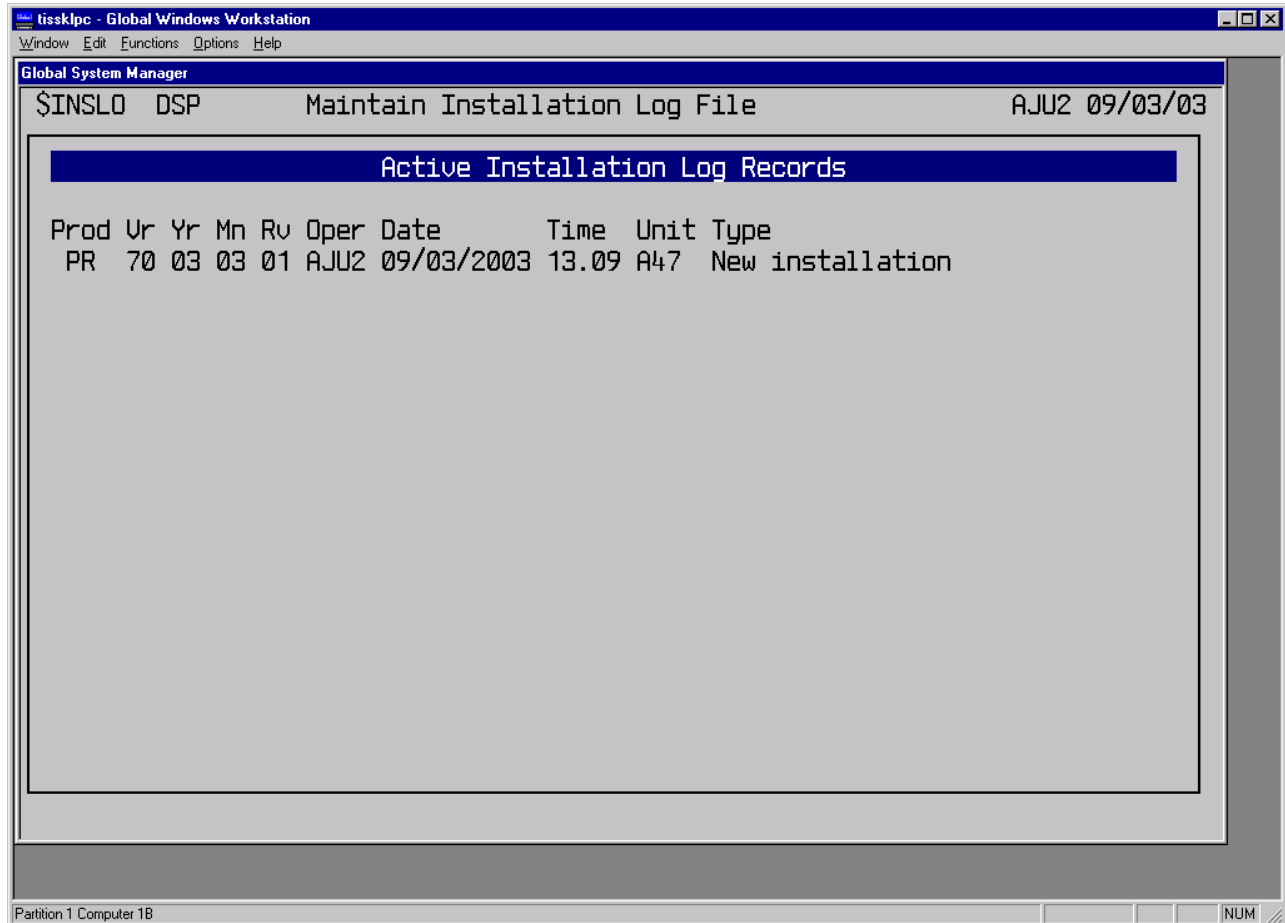


Key <CR> and the Global Cabinet file directory window will re-appear.



Key <ESCAPE> to exit the installation process.

At this stage \$INSLOG can be used to confirm that the installation has completed successfully:



Key <ESCAPE> to exit \$INSLOG once the installation information has been digested.

8.4 Errors During Installation

The product-specific installation phase may fail after displaying an error message. Some of the error messages are self-explanatory, and immediately suggest the recommended course of action. For example:

Menu file is full

However, other error messages are more severe and should be reported to the Global Hotline immediately:

Error assigning \$P - Please contact your software supplier
Error assigning \$DP - Please contact your software supplier
Error assigning \$\$D - Please contact your software supplier
Error updating DLM library - Please contact your software supplier
Error copying Reporter pages - Please contact your software supplier
Error updating monitor, error code x
Error copying Monitor pages - Please contact your software supplier

Appendix A - Glossary of terms and acronyms

This appendix describes the various new terms introduced in this document:

Acronym	Term	Meaning
GCF	Global Cabinet File	Windows binary file containing a Compressed Global format Installation Template Volume
GLF	Global Product Licence File	Windows text file emailed to a reseller to fulfill a software order
GPS	Global Product Set	Collection of GCF's routinely released on a monthly basis
GSMSP	GSM Service Pack	A collection of files in \$BBS format (within a Service Pack directory) that can be used to upgrade GSM very rapidly, without the need for a re-installation. GSM Service Packs are normally applied using a bespoke job devised for the particular upgrade
GSP	Global Product Service Pack	A single file that provides a Service Pack upgrade to a software module. Global Product Service Packs are applied using the \$GSP utility
IPL	Installed Program Logfile	A Global log-file that contains a full installation and upgrade history for all Global 3000 V5.0 and Global 3000 Payroll V7.x products
ITV	Installation Template Volume	Global volume created by the Development Team and converted to a GCF for external release

Appendix B - \$LICENCE Recommended Procedure

In the various internal trials of \$LICENCE we have developed the following recommended procedure for activating GCF's:

- On a suitable PC, create a directory to hold all the Global Licence Files (GLF) that are emailed to fulfill orders;
- For each order, create a sub-directory which is simply the serial number of the end-user;
- Optionally create a work-directory to hold the contents of the latest Global Product Set (GPS). For convenience, the monthly CD can be copied to a suitable work directory on a PC;
- \$LICENCE prompts for the name of the Global Licence File and input and output directories. The licence files will always be accessed in the same "Licence File" directory. The supplied input directory should be the root directory of the CD, or the work directory that has been allocated to hold the GPS. The output directory should be the serial-number specific directory;
- When using \$LICENCE, the same "GLF directory" is specified every time, the same input directory (either the root directory of the CD, or the "GPS directory") is specified every time, only the instantly recognisable output directory is changed for each run of \$LICENCE.

The following example directory structure results:

D:\glfs	Global Licence Files
D:\gcfs	Unserialised Global Cabinet Files
D:\gcf1230001	Global Cabinet Files serialised for
1230001	
D:\gcf1230002	Global Cabinet Files serialised for
1230002	
D:\gcf1230003	Global Cabinet Files serialised for
1230003	
etc.	