

Special Database Conversions

1. Introduction

This document describes a number of special database conversions that are available in the \$BADGN, \$32BADGN, \$BADN, \$BADN, \$BN32, \$BS32 and \$DXU family of utilities.

A number of special conversion options are possible:

- Computational to Character Conversion with SPACE Fill;
- Computational to Character Conversion with Zero Fill;
- Named-field to Named-field Conversions.

1.1 Computational to Character Conversion

This option allows the format of a field to be automatically changed from computational (e.g. PIC 9(4) COMP to character (e.g. PIC X(4)). For example, if the field STSIZE is a PIC 9(4) COMP field in the current database but is defined as a PIC X(4) in the Conversion Dictionary. The length of the character field in the conversion dictionary must be large enough to hold the computational field in display format. The character field will be right justified after conversion. If this option is not set then any attempt to convert a field from computational to character will result in an error.

1.1.1 Zero Fill

When the "Computational to Character Conversion" option is set, by default "empty" characters on the left of the string are space filled. For example the number 1 converted to a four character field will be converted as " 1" (i.e. with 3 leading SPACE characters). If the Zero Fill option is set then these 'empty characters' are set to "0" so 1 will now become "0001".

1.2 Special Conversions

This option allows a field in the input database to be converted to a **different** field in the output database. You will be prompted for the name of the original fields and the name of the fields to which they are to be mapped. Note that the "Computational to Character" and Zero Fill options will be honored for these conversions, if applicable.

2. \$BADGN (\$BADGX) and \$32BADG

This section describes both the \$BADGN and \$32BADG utilities. Note that, unless actions are taken to prevent it, \$BADGN (\$BADGX) will automatically chain to \$32BADG when running on a GX screen.

2.1 \$32BADG

The initial conversion window displayed by \$32BADG is as follows:

Special Database Conversions

The screenshot shows a software window titled "P1 - Global Speedbase Databases". It has a menu bar with "File", "Run", "Settings", "Options", and "Help". Below the menu bar is a toolbar with icons for "Function 1", "Function 2", "Function 3", "Next", "Home", "Clear", "Enquire", "Delete", "Insert", "Abort", "Move", "Help", and "Launch".

The main area of the window is a "Database Conversion" dialog box. It contains two sections:

- Database Details:**
 - Name: DEMON
 - Unit: 210
 - Title: Speedbase Sample Application
 - Generation number: 23
- Conversion Dictionary:**
 - Name: DEMON
 - Unit: 205
 - Generation number: 23

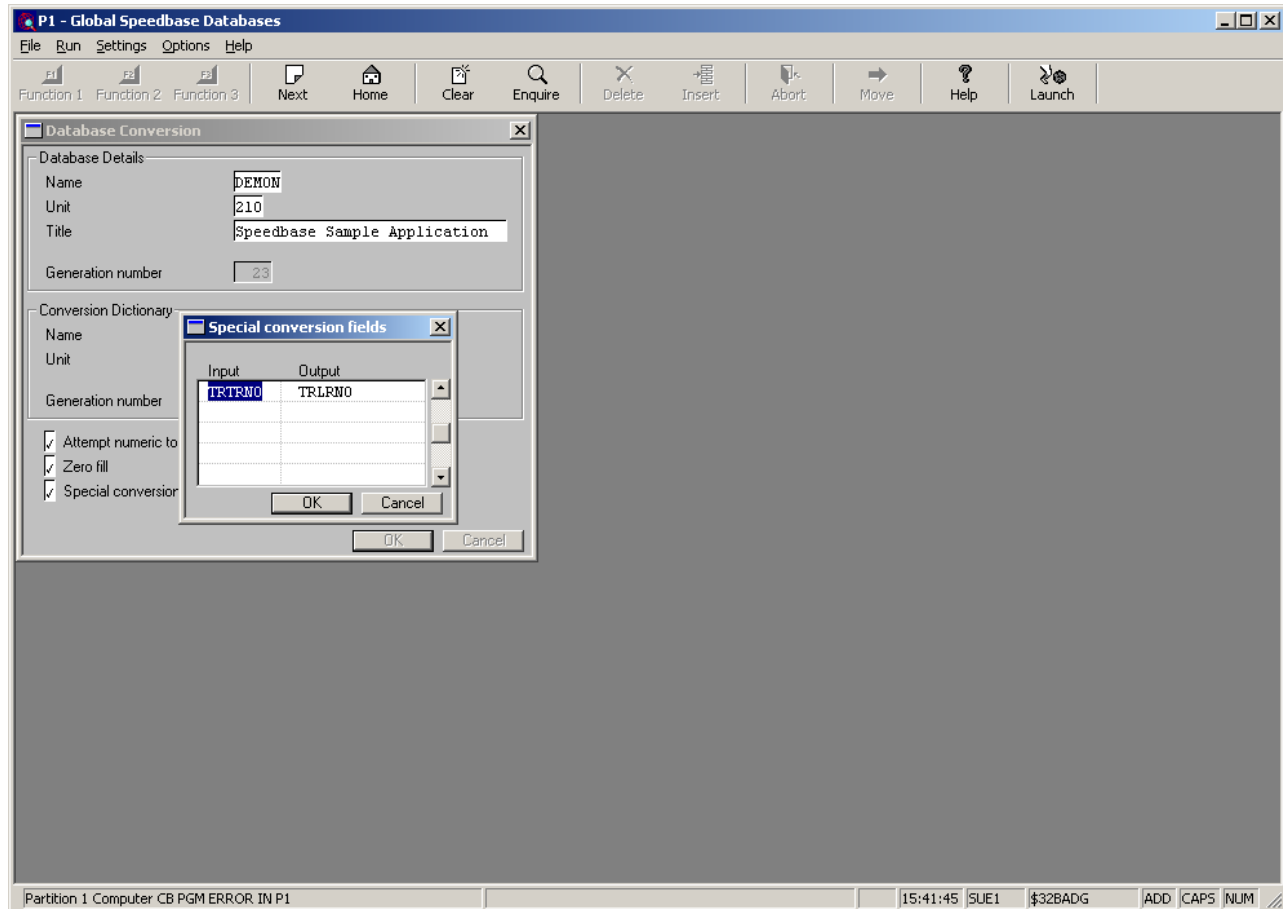
Below the Conversion Dictionary section are three checkboxes:

- ☐ Attempt numeric to character conversion
- ☐ Zero fill
- ☐ Special conversion fields required

At the bottom of the dialog box are "OK" and "Cancel" buttons.

The status bar at the bottom of the window displays: "Partition 1 Computer CB PGM ERROR IN P1", "15:39:34 SUE1", "\$32BADG", and "ADD CAPS NUM".

You may select the conversion options as required. If special conversion fields are required you will be allowed to enter up to 5 mappings as shown below:



2.2 \$BADGN (\$BADGX)

The special conversion options are **NOT** supported in the 16-bit, non-GX \$BADGN utility. However, 2 of the 3 options are available in the 16-bit, non-GX \$BADGX utility. \$BADGX is actually a renamed \$BADGN. This strange convention (i.e. effectively running \$BADGN renamed as \$BADGX) is to avoid any new dialogue appearing from \$BADGN that will adversely affect existing Job Management. It is assumed that no Job Dialogue for \$BADGX currently exists. Note that \$BADGX (i.e. a renamed copy of \$BADGN) has been released with all GSM Service packs from GSM SP-14).

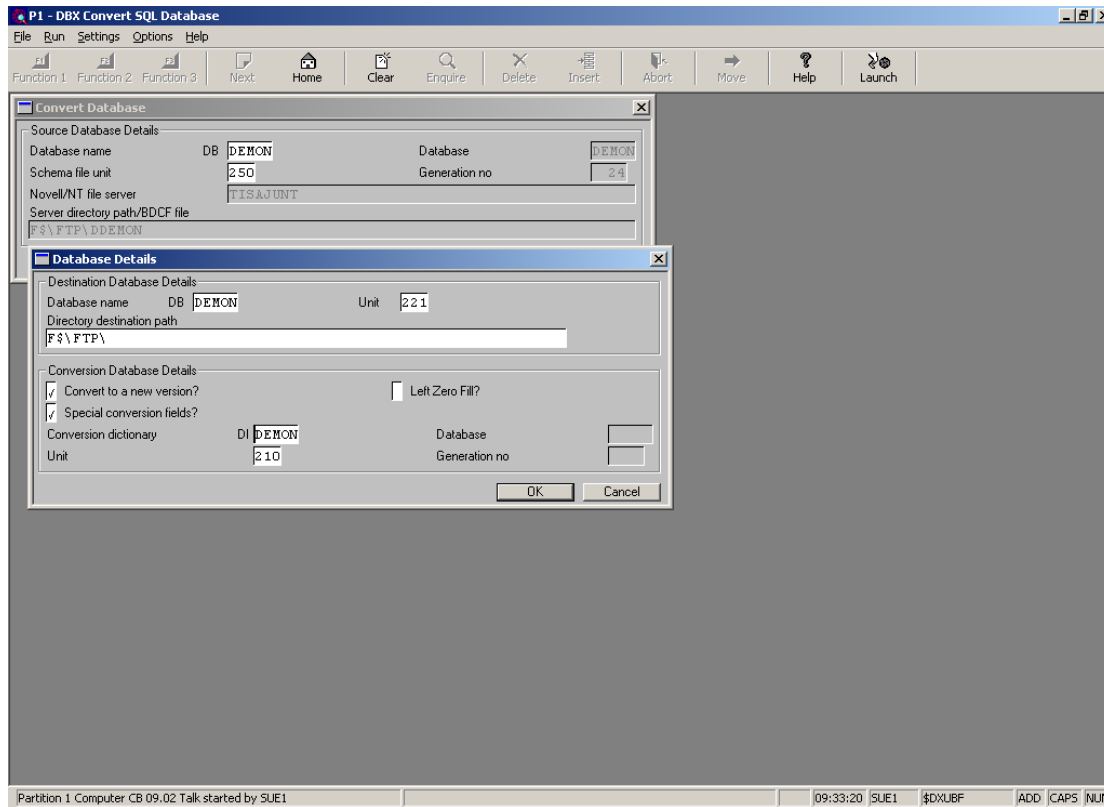
Running \$BADGX instead of \$BADGN automatically enables the Computational to Character conversion option so no extra dialogue is required.

After entering the conversion file details IN \$BADGX you will be prompted for the input and output names for special conversion.

Important Note: \$BADGX, unlike \$32BADG, does **NOT** include an option to Zero Fill fields converted from Computational to Character.

3. \$DXU

To enable special conversion you must tick the "Special conversion fields?" tick box.



There is no separate "Computational to Character" option and this will be always assumed.

To enable the Zero Fill option, tick the "Left Zero Fill?" tick box.

4. \$BADN, \$BADs, \$BN32 and \$BS32

This section describes both the \$BADN (\$BADs) and \$BN32 (\$BS32) utilities. For the purposes of this document the Pervasive SQL database conversion utilities \$BADN (16-bit) and \$BN32 (32-bit) are equivalent to the Microsoft SQL database conversion utilities (\$BADs (16-bit) and \$BS32 (32-bit)).

Note that, unless actions are taken to prevent it, 16-bit \$BADN will automatically chain to 32-bit \$BN32 when running on a 32-bit GSM run-time system. Note that, unless actions are taken to prevent it, 16-bit \$BADs will automatically chain to 32-bit \$BS32 when running on a 32-bit GSM run-time system.

4.1 \$BN32 & \$BS32

To enable special conversion you must key "X" to the "Do you want to convert to a new version?" prompt.

Special Database Conversions

P1 - Convert Btrieve/SQL Database

File Run Settings Options Help

Function 1 Function 2 Function 3 Next Home Clear Enquire Delete Insert Abort Move Help Launch

Convert Database

Source Database Details

Database Name DB Database ID
Schema file unit Generation No
Novell/NT File Server
Server Directory Path/BDCF File

Convert Database

Destination Database Details

Database Name DB Unit
Directory Destination Path
Conversion Database Details
Do you want to convert to a new version ☒
Conversion Dictionary DI Database ID
Unit Generation No
Is this the database Dictionary you want for conversion? ☐
OK Cancel

Partition 1 Computer CB PGM ERROR IN P1 16:52:31 SUE1 \$BN32F ADD NUM

The 'X' will immediately be redisplayed as a "Y" for internal reasons. There is no separate "Computational to Character" option and this will be assumed if "X" is entered. For the special conversion you will be prompted if you want to Zero Fill the Computation to Character conversion fields.

Special Database Conversions

P1 - Convert Btrieve/SQL Database

File Run Settings Options Help

Function 1 Function 2 Function 3 Next Home Clear Enquire Delete Insert Abort Move Help Launch

Convert Database

Source Database Details

Database Name DB Database ID
Schema file unit 257 Generation No 1
Novell/NT File Server TISBRCXP
Server Directory Path/BDCF File

Convert Database

Destination Special conversion

Database Name DB
Directory Destination I
D:\SUE\SUE1\

Left zero fill ☐

OK Cancel

Conversion Database Details

Do you want to convert to a new version ☒
Conversion Dictionary DI I Database ID
Unit 258 Generation No 4

Is this the database Dictionary you want for conversion? ☒

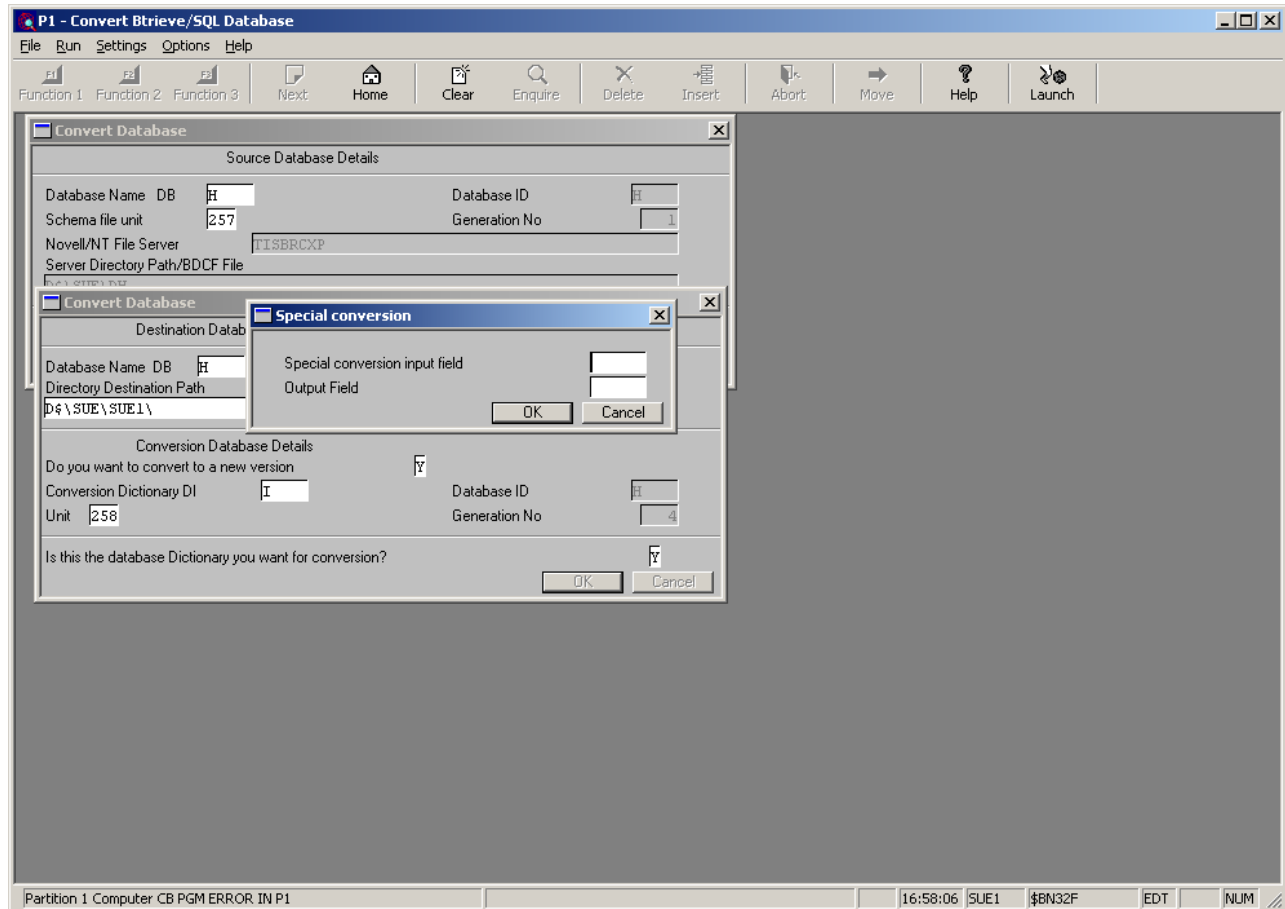
OK Cancel

Generating BDCF file - Please Wait...

Partition 1 Computer CB PGM ERROR IN P1 16:56:19 SUE1 \$BN32F EDT CAPS NUM

You will then be repeatedly asked for any special conversion input and output fields you require. There is no limit to the number you can specify.

Special Database Conversions



Clicking the “Cancel” button (*sic*) will end this list.

4.2 \$BADN & \$BADs

To enable special conversion you must key "X" to the "Do you want to convert to a new version?" prompt.

1698 & 1715

Window Edit Functions Options Help

Global System Manager

\$BN32F EDT Convert Btrieve/SQL Database ALAN 07/09/05

Convert Database

Source Database Details

Database Name DBDEMON Database ID DEMON
 Schema file unit 201 Generation No 23
 Novell/NT File Server tisajunt

Desti Special conversion

Database Name Special conversion input field
 Directory Desti Output Field
 C:\PUBLIC

Conversion Database Details

Do you want to convert to a new version X
 Conversion Dictionary DIDEMON Database ID DEMON
 Unit 204 Generation No 23

Is this the database Dictionary you want for conversion? Y

Generating BDCF file - Please Wait...

Partition 1 Computer CA HOTLINE 10397 updated by SHUT CAPS NUM

You will then be repeatedly asked for any special conversion input and output fields you require. There is no limit to the number you can specify.

There is no separate "Computational to Character" option and this will be assumed if "X" is entered. For the special conversion you will be prompted if you want to Zero Fill the Computational to Character conversion fields.

1698 & 1715

Window Edit Functions Options Help

Global System Manager

\$BN32F EDT Convert Btrieve/SQL Database ALAN 07/09/05

Convert Database

Source Database Details

Database Name DBDEMON Database ID DEMON
 Schema file unit 201 Generation No 23
 Novell/NT File Server tisajunt

Desti **Special conversion**

Database Name Left zero fill
 Directory Desti f\$\ftp\

Conversion Database Details

Do you want to convert to a new version Y
 Conversion Dictionary DI Database ID
 Unit Generation No

Is this the database Dictionary you want for conversion?

Partition 1 Computer CA HOTLINE 10397 updated by SHUT

CAPS NUM

5. Summary of Options and Dialogue

The following table summarises the Special Database Conversion options in the various database utilities.

Program	Comp. to char.	Zero Fill	Special Conversions
\$BADGN	Not supported	Not supported	Not supported
\$BADGX	Always enabled if program name is \$BADGX	Not supported	Always prompted for if program name is \$BADGX
\$32BADG	Separate tick box	Separate tick box	Separate tick box
\$BADN	Reply of "X" to the Convert to a New Version field. The "X" remains in the window.	Prompted for in a separate window	Reply of "X" to the Convert to a New Version field. The "X" remains in the window.
\$BADS	Reply of "X" to the Convert to a New Version field. The "X"	Prompted for in a separate window	Reply of "X" to the Convert to a New Version field. The "X" remains in the window.

Special Database Conversions

	remains in the window.		
\$BN32	Reply of "X" to the Convert to a New Version field. The "X" is automatically converted to a "Y".	Prompted for in a separate window	Reply of "X" to the Convert to a New Version field. The "X" is automatically converted to a "Y".
\$BS32	Reply of "X" to the Convert to a New Version field. The "X" is automatically converted to a "Y".	Prompted for in a separate window	Reply of "X" to the Convert to a New Version field. The "X" is automatically converted to a "Y".
\$DXU	Always assumed	Separate tick box	Separate tick box