

Installing Global 3000 V6.0

1. Introduction

This document describes the software distribution and installation mechanism used to install Global 3000 V6.0.

The installation process for Global V6.0 is very similar to the installation process for Global Payroll V7.2 and readers who have installed Payroll V7.2 will be very familiar with the technique for Global 3000 V6.0.

The installation process for Global 3000 V6.0 is an improvement on the installation process for Global 3000 V5.0. Readers who have installed Global 3000 V5.0 will be familiar with most of the techniques required for V6.0.

IMPORTANT NOTE: Unlike previous versions of Global-3000, V6.0 can only be installed on GX.

Before attempting any of the procedures described in this document please refer to the "pre-requisites" section described in Appendix B. In particular, **the appropriate "GSM Service Pack" must be applied in order to use some of the utilities described below.**

2. Software Installation Overview

Global software distributed within a Global Product Set is installed via a multistage process:

- One, or more, de-activated Global Cabinet Files (see section 3) are activated using the \$LICENCE utility (see section 5). This process requires a valid Global Licence File (see section 4);
- The activated Global Licence Files are installed using the \$SETUP utility (see section 7);

The \$SETUP utility also allows the contents of an activated GCF to upgrade a pre-installed product (see section 7). This process does not require the application-specific installation phase.

In addition to using \$SETUP to upgrade installed software from a set of activated Global Cabinet Files, software updates may also be applied from a "Global Product Service Pack" using the \$GSP utility.

Please note that some of the advanced options in the various generic installation programs and service pack utilities are only available when the licencing and installation is performed on GX.

3. Global Product Cabinet Files (GCF's)

One of the key components in the software distribution mechanism is the Global Product Cabinet File (GCF). A Global Product Cabinet File is created for each software module/version combination. Each Global Product Cabinet File is released as a standard Windows file and contains all the software components for a particular module.

The GCF's released in the GPS are un-serialised and de-activated. The \$LICENCE utility (see section 5) serialises and activates one, or more, GCF's.

The naming convention for a Global Product Cabinet File is as follows:

ppv_v_yymmrr.GCF

where:

<i>pp</i>	Product Code (e.g. ZM)
<i>vv</i>	Version Number (e.g. 60)
<i>yy</i>	Year Number of release (i.e. 05=2005; 06=2006 etc.)
<i>mm</i>	Month Number of release (01 to 12)
<i>rr</i>	Revision Number of release (01 to 99)

For example, the August-2005 first release of the ZM V6.0 product will be:

ZM60_050801.GCF

The October-2006 third revision of the ZI 6.0 product will be:

ZI60_061003.GCF

Note that the various GCFs for a particular Product Code/Version Number combination naturally collate in order of release revision.

3.1 The GSM Cabinet File

In addition to the various Global Product Cabinet Files, the Licensing procedure (\$LICENCE) also requires the presence of the GSM Cabinet File **in the same Windows folder** as the Global Product Cabinet File(s). The naming convention for a Global Product Cabinet File is as follows:

GSM81_yymmrr.GCF

where:

<i>yy</i>	Year Number of release (i.e. 05=2005; 06=2006 etc.)
<i>mm</i>	Month Number of release (01 to 12)
<i>rr</i>	Revision Number of release (01 to 99)

For example, the following GSM Cabinet File was released in August-2005:

GSM81_050801.GCF

Note the (deliberate) similarity between the name of the GSM Cabinet File (GSM81_yymmrr.GCF) and the various Global Product Cabinet Files (ppvv_yymmrr.GCF).

The root directory of the Global Reseller CD contains the GSM Cabinet File and the various Global Product Cabinet Files. **If you ever copy the contents of the Global Reseller CD to another folder you must ensure that the GSM Cabinet File always accompanies the various Global Product Cabinet Files.**

4. The Global Licence File (GLF)

For every software order that includes one, or more, products that are available on the current GPS, a Global Licence File (GLF) will be emailed to the reseller who has placed the order.

The Global Licence File (GLF) is a simple Windows text file that contains the following information:

<i>Line number</i>	<i>Description</i>
1	Comment line describing the creation date, time and operator-id;
2	Version number (as a 4 digit decimal number);
3	7-character order number;
4	Serial number and standard checksum
5	Plain-text description of 1 st Product & Version
6	Encrypted 1 st Product & Version
7	Plain-text description of 2nd Product & Version
8	Encrypted 2nd Product & Version
9	Plain-text description of 3rd Product & Version
10	Encrypted 3rd Product & Version
	etc.

For example:

```
* Licence file created on 30/08/2000 at 16.42.13 by ALAN
0001
123456X
83300030IMZXQ
* Product code NY version V6.0
HDBDTNZZKPQDJZRHNMBOQZQPCCZCCCBLHJTFLNYCZZYLKKNK
* Product code ZI version V6.0
SJBBDTNZZKPQCYXTLDMBOQZQPCCZCCCBLJFTBJVPZICZZLZKKNK
* Product code ZT version V6.0
KFBBDTNZZKPQNMVGNBMBQZQPCCZCCCBLBDBBDPZTCZZKJKKNK
* Product code ZQ version V6.0
HQBBDTNZZKPQTSRKTHMBQZQPCCZCCCBLJRDFTCSZQCZZYGKKNK
```

The name of the GLF is always `ssssss_nnnnnna.lic`, where `ssssss` is the serial number; and `nnnnna` is the Order Number for the software order. For example, the above licence file will be called:

`8330003_123456X.lic`

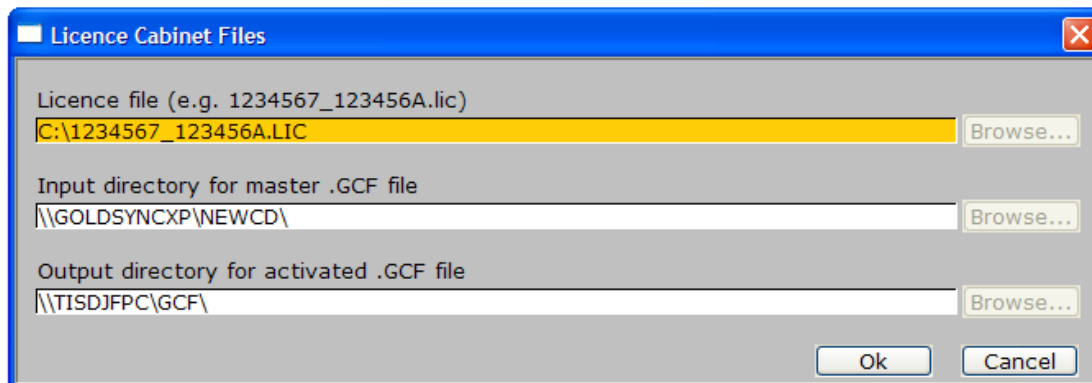
Although the encrypted licence information appears daunting to key in, the licencing mechanism does not require any information other than the name of the GLF file to be supplied by the reseller. It is **not** necessary to key in the 50 character passwords. The \$LICENCE utility (see section 5) extracts the passwords from the GLF.

5. \$LICENCE Overview

Running the \$LICENCE utility is the first stage in installing Global software from the GPS. The \$LICENCE utility merely "activates" the appropriate Global Cabinet File for every product listed in the Global Licence File. The \$SETUP utility (see section 7) is then used to install the software from one, or more, activated GCF's.

This 2-stage installation process has been implemented to keep the software activation and serialisation process separate from the actual software installation process. This 2-stage process allows the activation and serialisation phase to be performed at the reseller's premises on a GSM (Windows) configuration; and the software installation phase to be performed, on any configuration, on the end-users system (remotely, if necessary).

\$LICENCE prompts for the name of the Global Licence File and input and output directories. The input directory may be the root directory of the monthly CD or a work directory on a PC, or server, that contains the required Global Cabinet Files (i.e. the monthly CD can be copied to a suitable work directory on a PC). The output directory may be the same, or different, from the input directory (obviously the output directory must have write permissions).



In this example:

`C:\1234567_123456A.lic`

name of the Global Licence File (GLF).

\\GOLDSYNEXP\NEWCD

input directory containing the **deactivated, un-serialised** Global Product Cabinet Files (GCFs);

\\TISDJFPC\GCF

output directory to hold the **activated, serialised** Global Product Cabinet Files (GCFs);

THE GSM CABINET FILE (SEE SECTION 3.1), OF THE SAME YEAR, MONTH & REVISION, MUST BE IN THE SAME FOLDER AS THE VARIOUS DE-ACTIVATED, UNSERIALISED GLOBAL PRODUCT CABINET FILES.

Furthermore, only a **single** GSM Cabinet File should be present in the input directory (i.e. the directory that contains the **deactivated, un-serialised** Global Product Cabinet Files). Stale copies of the GSM Cabinet may cause the activation procedure to fail.

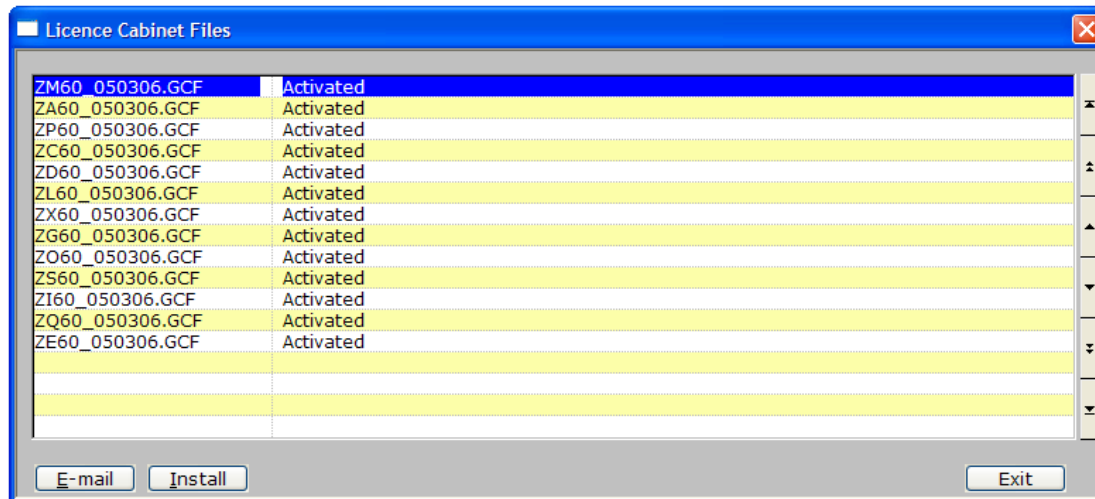
\$LICENCE scans the GLF to activate and re-serialise every Global product listed in the GLF. As well as changing the contents of the GCF's, this re-serialisation procedure also involves renaming the GCF from:

ppvv_yymmrr.GCF

to:

ppvv_yymmrr_ssssss.GCF

where *ppvv_yymmrr* are described in section 3 and *sssssss* is the serial number that the GCF has been activated for. This rename should allow the software for a particular site to be readily identified.



To start the actual installation of the software from the serialised cabinet files you can either use the Install button at the bottom of the window which invokes the \$SETUP utility or manually run \$SETUP at a later date when you are ready to install the software.

6. \$LICENCE Recommended Procedure

In the various internal trials of \$LICENCE we have developed the following recommended procedure for activating GCF's:

- On a suitable PC, create a directory to hold all the Global Licence Files (GLF) that are emailed to fulfil orders;
- For each order, create a sub-directory which is simply the serial number of the end-user;
- Optionally create a work-directory to hold the contents of the latest Global Product Set (GPS). For convenience, the monthly CD can be copied to a suitable work directory on a PC. **THE GSM CABINET FILE (SEE SECTION 3.1), OF THE SAME YEAR, MONTH & REVISION, MUST BE IN THE SAME FOLDER AS THE VARIOUS DE-ACTIVATED, UNSERIALISED GLOBAL PRODUCT CABINET FILES;**
- \$LICENCE prompts for the name of the Global Licence File and input and output directories. The licence files will always be accessed in the same "Licence File" directory. The supplied input directory should be the root directory of the CD, or the work directory that has been allocated to hold the GPS. The output directory should be the serial-number specific directory;
- When using \$LICENCE, the same "GLF directory" is specified every time, the same input directory (either the root directory of the CD, or the "GPS directory") is specified every time, only the instantly recognisable output directory is changed for each run of \$LICENCE.

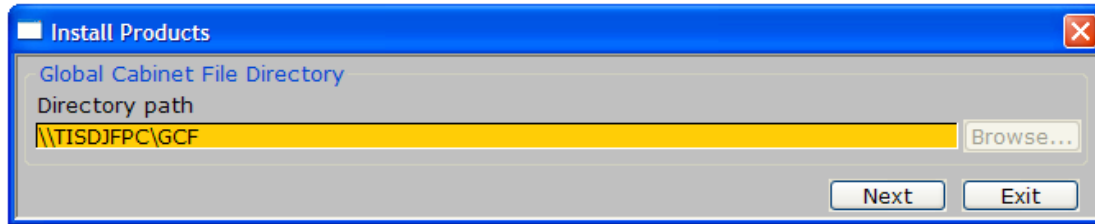
The following example directory structure results:

D:\glfs	Global Licence Files
D:\gcfs	Un-serialised Global Cabinet Files
D:\gcf1230001	Global Cabinet Files serialised for 1230001
D:\gcf1230002	Global Cabinet Files serialised for 1230002
D:\gcf1230003	Global Cabinet Files serialised for 1230003
etc.	

7. \$SETUP

7.1 Activated cabinet file location

\$SETUP prompts for the name of the directory containing the activated, and serialised, Global Cabinet Files.

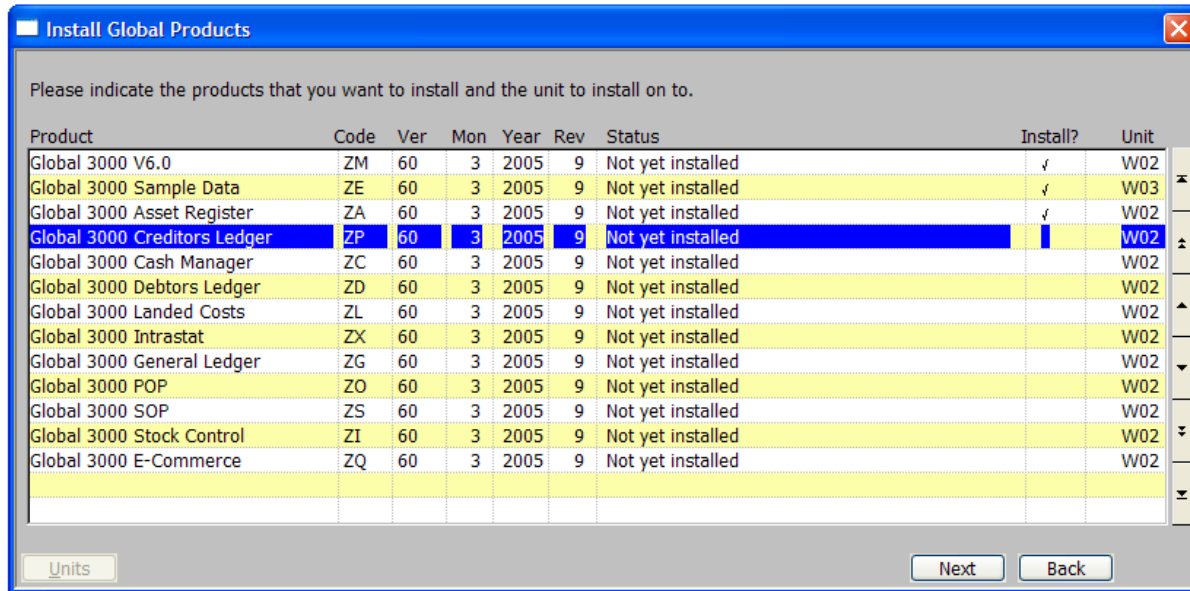


Specify the folder containing the Activated Cabinet File(s) that were created by \$LICENCE (see section 6) and select the "Next" option.

If you have used the Install option from the \$LICENCE program, this step is omitted as the location of the activated cabinet files is already known.

7.2 Products to be installed

Every serialised Global Cabinet File in the Windows directory is validated and a list of all the possible installable products is presented:



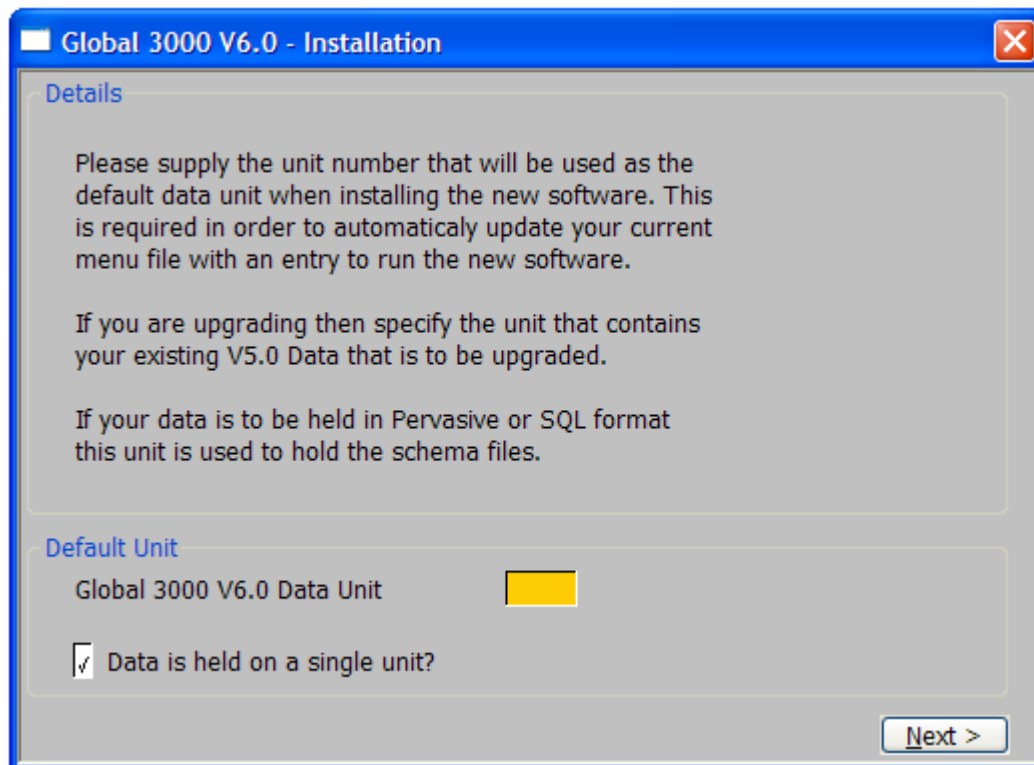
Important Note: For version of Global System Manager prior to SP-21, regardless of how many other products are being installed, the product titled "Global 3000 V6.0" (product code ZM) **must** be selected for installation at the same time (even if this product is already installed). For Global System Manager SP-21 or later and Global 3000 released on, or after, the July 2006 Global Reseller CD, regardless of how many other products are being installed, the product titled "Global 3000 V6.0" must be selected for installation at the same time unless the same version of the product has previously been installed.

The re-installation of product ZM **may**, under some conditions, cause some ZM service packs to be lost. In this eventuality, \$SETUP will warn you of the situation and offer the option to run \$GSP to re-apply the "missing" ZM service packs.

If you need to install the “Global 3000 V6.0” product to you are prompted for the physical unit on which the software is to be installed. If it has been previously installed then the unit on which it has been installed appears in the Unit column. This unit is used as the installation unit for all other Global 3000 V6.0 products to be installed with the exception of the Global 3000 V6.0 Sample Data product. This product also requires the entry of a physical unit on which the data is to be installed. For obvious reasons this should not be a unit that currently holds any data.

Units specified here do not have to be pre-allocated. If the unit does not already exist, the installation process will create the given unit large enough to contain all the products being installed to it.

As each module is installed one or more windows may be displayed to prompt for information required by the installation process. The following two windows are always displayed for the first module installed:



Purpose

The window prompts for data location defaults to be used when installing each module.

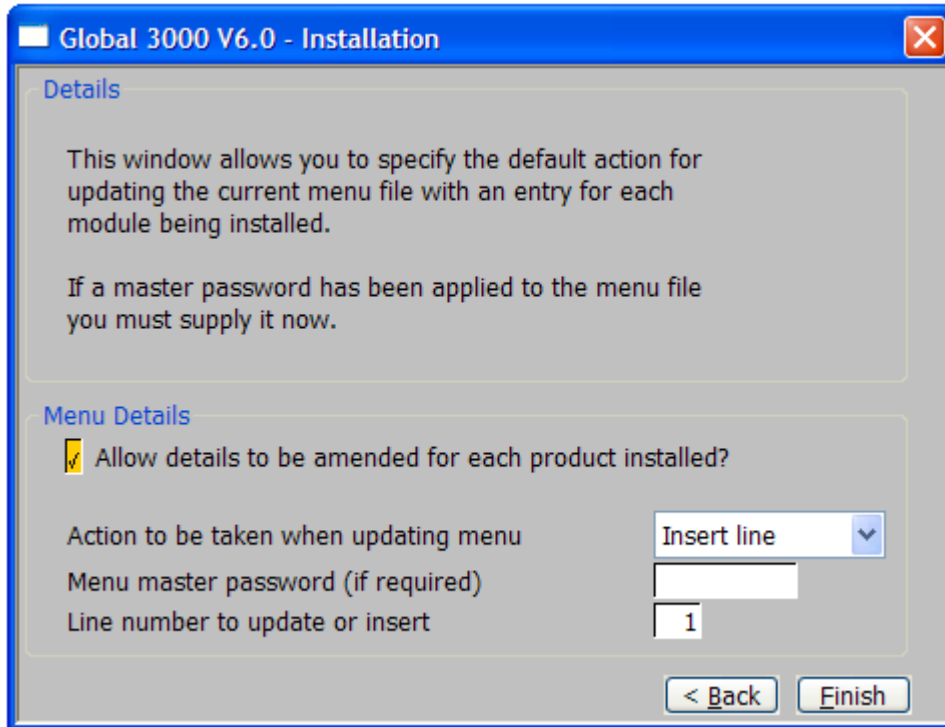
**Global 3000 V6.0
Data Unit**

Enter the default physical unit where the V6.0 data is to reside. If you are going to upgrade a set of V5.0 data, then this should be the unit holding the data to be upgraded.

This unit information is required to correctly update the current menu file with an entry for each module being installed – if selected.

Data is held on a single unit

Enable this option if all data for V6.0 resides on a single unit. This will avoid you being prompted for this information for each module being installed.



Allow details to be amended for each product installed

Selecting this option will present the following entries as defaults for each module installed.

If this option is not enabled, then all modules are installed with these settings in force.

Action to be taken when updating menu

You have four options when deciding how to update the menu file.

No Action No menu file update is to take place.

Insert Line A menu line is to be inserted at the specified line number. When installing multiple products the default line number is incremented for each product.

Add Line Add an entry to the end of the current menu.

Update Line Enter a line number that is to be updated for each product installed.

Menu master password If the menu file to be updated requires a password in order for it to be accessed, please enter it here.

Line number to update or insert Only prompted for when either inserting or updating a menu line.

Appendix A - Glossary of terms and acronyms

This appendix describes the various new terms introduced in this document:

GCF	Global Cabinet File	Windows binary file containing a Compressed Global format Installation Template Volume.
GLF	Global Licence File	Windows text file emailed to a reseller to fulfill a software order.
GPS	Global Product Set	Collection of GCF's routinely released on a regular basis;
GSMSP	GSM Service Pack	A collection of files in \$BBS format (within a Service Pack directory) that can be used to upgrade GSM very rapidly, without the need for a re-installation. GSM Service Packs are normally applied using a bespoke job devised for the particular upgrade;
GSP	Global Product Service Pack	A single file that provides a Service Pack upgrade to a software module. Global Product Service Packs are applied using the \$GSP utility.

Appendix B - Pre-Requisites

In order for a reseller to install Global software from a Global Product Set (GPS) the following is required:

- PC with CD drive and at least 100Mb of free disk space;
- Ability to accept in-coming email with a simple text file attachment;
- PC running GSM (Windows) V8.1I with GSM Service Pack-18 (or later) applied. (Normally the same as the PC with the CD-drive);