

Tech Tip #9: Using Function Executor to Access Data

Overview: How to use WBEXEC32 as a test tool or to review/change data

Sometimes, applications fail for some unknown reason, and the error messages they offer are not always very helpful. One example of this is a “Failed To Open File” message – without indicating the file it attempted to open or the resulting Status Code that came back from the database. Ugh.

Luckily, Actian provides a tool called the **PSQL Function Executor** that can come to your rescue.

Essentially the **Function Executor** is a native Btrieve application that gives you ultimate access to your data -- every byte of every record – just like the application you are running. You can use this to read data, update data, correct minor errors, and even do some performance testing. Let’s see it in action.

First, start the **Function Executor** from the **PCC’s Tools** menu or from the Windows *Start* menu. You can also launch it manually by running *WBEXEC32.EXE*. Once opened, select *File/Open* or hit the *Open* button in the toolbar to get to the *Open Btrieve File* dialog, as shown here.

Enter the pathname to the file you wish to open (or use the Browse button), then click the *Open* button in the lower-left corner. If the file cannot be opened, you will get an error message with a Status Code – and this can tell you exactly why the file could not be opened. If the file can be opened properly, then this tells you that the PSQL database is working properly, and you will see a screen like that shown in Figure 2.

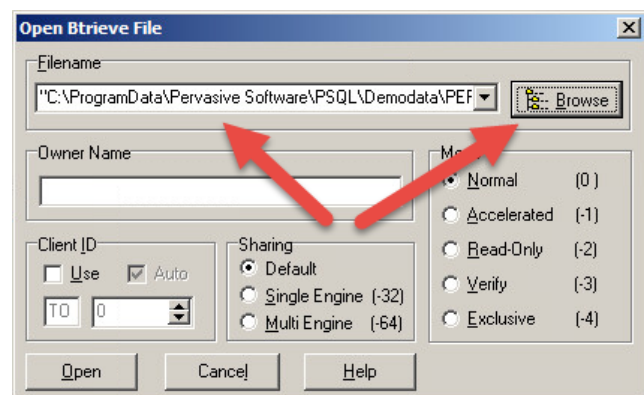


Figure 1: Open Btrieve File Dialog

Now that the file is open, you can read a record if you wish. To read the first record in the file in physical (step) order, click on the *StepFirst* button (◀). The *Data Buffer* block will be filled with the first record from the table. You can step through the subsequent records by clicking the *StepNext* (▶) and *StepPrevious* (◀) buttons, or jump right to the end with the *StepLast* (▶) button.

If you want to access records in order by a specific key, click the *Get* radio button, select a *Key Num* in the box provided, and then use the same buttons to step through the data.

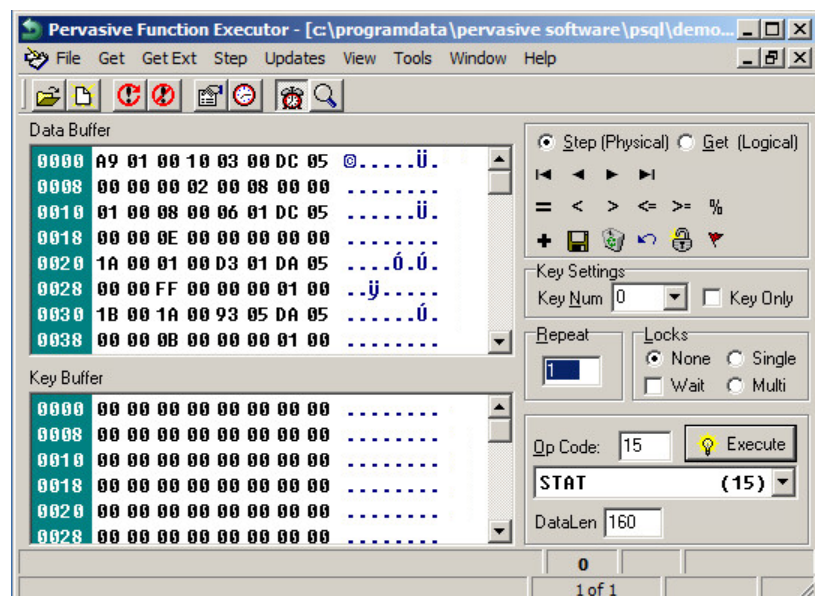


Figure 2: Function Executor Dialog

You can use the **Function Executor** as a simple performance-testing tool. First, open up a file in your environment. (We usually use the PERSON.MKD table in the DemoData folder.) Then, issue the *StepFirst* command to read the first record. This makes sure that the record is in cache and ready to go. Then, change the *Repeat* field to a large

